

SPC and Graphical Reporting Computer-Aided Manufacturing Measurement Solution

As a companion to FARO's CAM2 Measure and CAM2 Automotive software, SPC Graph provides instant graphical reporting and Statistical Process Control (SPC) contained in one powerful application.

Visual reports combine a graphical image of the measured features and display the nominal, actual, and other specified information in a table. The table is anchored to the part image with a leader arrow. This visually communicates the answers to measurement and fit questions - that saves time and money.

Full charting capability adds analysis of part deviation, process capability, and process control, graphically displayed directly on your part.

Most Common Applications:

Aerospace: *Simulation, Repair & Refit*

Tool & Die: *Master Molds, Tool Setup*

Automotive: *Body in White, Functional Build*

Castings & Moldmaking: *Pre-Cast Mold, Composite Tooling*

The screenshot displays the FARO CAM2 SPC Graph application. The main window shows a 3D model of a mechanical part with several measurement tables and run charts overlaid. Red arrows point to specific features and data points.

Parts Listmenus: A list of features on the left side of the interface, including C_CIRCLE1 through C_CIRCLE10 and H_POINT1.

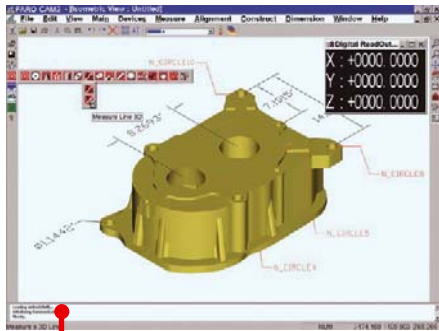
Tables that include colored-coded measured to nominal deviation: Multiple tables are shown, each with columns for feature name, coordinate (X, Y, Z), and deviation values. For example, C_CIRCLE1 has X: +0006.0001, Y: +0000.0000, Z: +0000.0000, Dia: +0004.5631, and Fem: +0000.0000.

Range and average charts: Run charts are displayed for various features, showing data points over time. For example, the chart for C_CIRCLE1 shows a range of approximately 11.0000 to 11.0030.

Multipreview display: The interface shows multiple views of the part, including a top view and a side view.

Display tables linked to each feature: Tables are anchored to specific features on the part, providing detailed measurement data for each feature.

Run charts: Small charts are displayed for each feature, showing the process control data.

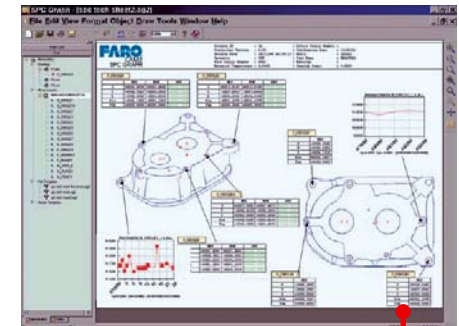
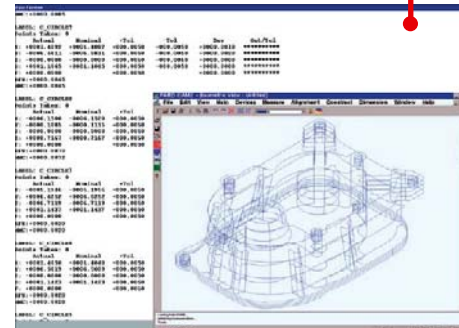


Collects data directly from other Faro CAM2 software

Pick features and create charts



Get your display and data



Report your results

Specifications

Platform:

- Windows® NT 4.0
- Windows® 2000
- Windows® XP

Data Input:

- BMP
- DIB
- EMF (Graphics)
- MDB (Database)

Data Output:

- Hardcopy
- EMF
- BMP

Languages:

- English
- French
- German
- Spanish • Portuguese

From design to production, large scale to detail, more manufacturers choose FARO — the global standard for portable computer-aided manufacturing measurement.

USA: Orlando, Detroit, Los Angeles, Charlotte, Columbus, Chicago, Dallas, Seattle, Philadelphia
800.736.0234. 407.333.9911 • Fax: 407.333.4181



Europe: Germany, France, United Kingdom, Spain, Italy
Asia: China, Japan
E-mail: info@faro-europe.com • www.faro.com



Guide 25 Approved

The Measure of Success • La Medida del Éxito • La mesure du succès • Das Maß des Erfolgs • La misura del successo