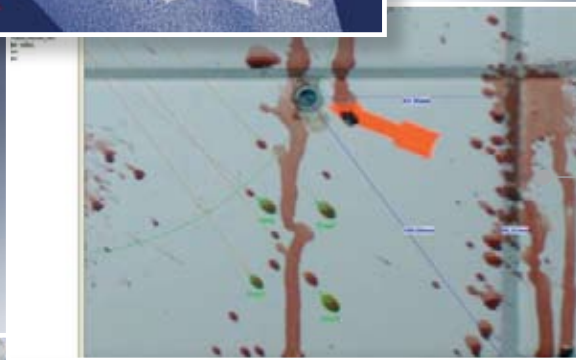


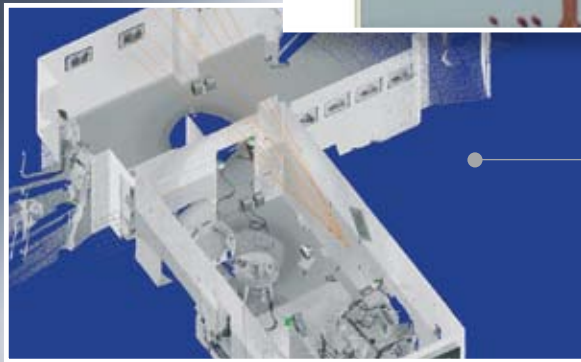
Forensic



Instantly Capture All Crime Scene Details



Blood Splatter Analysis & Measurement in High Resolution Photo



Blood Splatter & Bullet Shot Trajectories

FARO Forensic Package

The combination of the FARO LS' high quality data capture and the FARO Forensic Package provides a powerful tool for capturing 3-D investigation scenes. Scene analysis and documentation are streamlined into one easy-to-operate solution, assisting in faster scene assessments, easy-to-interpret visual aids and effective digital storage of critical information for the total duration of the investigation. You can now clear the investigation area faster, reducing possible contamination and the impact on surrounding services. Return to the scene at any time for re-evaluation and new theory confirmation.

Benefits

- ▶ Direct interface with FARO Laser Scanner LS
- ▶ Scan Regions
- ▶ Assisted 3-D Analysis
- ▶ Quality Data Storage Management
- ▶ CAD Support
- ▶ Scene Visualization & Color Overlay

Creating Workspaces

- Creating scenes with colorized scan points as well as hi-res photo overlays
- Scan viewing, filtering, registration direct or with Survey Points
- Import of CAD objects via VRML
- Object recognition with Cylinder/Spheres/Planes (inc. automatic border detection)
- Edge detection
- 3-D - triangulated meshes
- Intuitive user interface with structure view and support of drag-and-drop functionality between Windows Explorer and FARO Scene

Data Management

- Hierarchical structure of scene and scans
- Analysis results stored in objects with export capability
- Highly efficient storage with max. compression
- One workspace for all collateral data incl. photos, blood drops, trajectories etc.

Views

- Photographic view incl. hi-res photos
- 3-D view with VRML objects
- Quick .jpg image-view
- Multiple photo overlays with CCD-cameras, line cameras, single shots, hi-res shots
- Display of blood splatter and bullet trajectories
- Perspective View of Surveillance Camera Photo in the 3-D Scene

Import & Export

- Targets (.cor)
- Scan points / Scan pictures (.jpg)
- CAD objects (.igs), (FARO Scan, Cloud, .dxf, VRML, .igs, .pts, .ptx, .ptc)

Navigation

- Displays scan positions for view point selection
- Fly-through, examine, pan

Analysis

- Distance measurement also in hi-res photo
- Viewing analysis also with imported models
- Blood splatter trajectories
- Structural analysis with slicing etc.
- Bullet shot trajectories
- Measurement in positioned and scaled surveillance photos for height and floor object measurement of suspects and objects

Advantages

Quick Start with immediate results: Easy to use wizards for hi-res photo overlay, blood splatter analysis and bullet trajectory detection. Well structured menus for intuitive interaction. Drag and drop for easy creation of workspaces. Onboard help. Easy to use measurement tools, object based measurement tools. Meshing to create 3-D - Surfaces with colored photo overlay. VRML import of CAD-models such as people, furniture, cars, guns etc. enable quick and easy scaled viewing at your fingertips.

Accurate & Fast 3-D Forensic Tools

For real time investigation with minimum trace deterioration. Sound & complete facts from reality at the touch of a button. Effective digital storage of critical information. Return to the scene at any time for re-evaluation and new theory confirmation. Solutions for the forensic professional exist in many areas:

- Crime Scenes
- Accident Investigation
- Bank Robberies
- Fire Incidents

System Requirements

- Microsoft Windows XP (Professional or Home Edition, SP1 or later); Windows 2000 (SP2 or later); Windows NT 4.0 (SP6)
- 1 GHz processor (2.5 GHz recommended)
- 1 GB RAM (2 GB recommended)
- Mouse with 2 buttons and wheel
- Graphics Card with 32MB & OpenGL hardware acceleration
- Ethernet card for licensing

