

# FARO Laser Scanner

**Product Catalog Specifications:**

Language: English - US





## Systems

### Laser Scanner Focus3D

#### Focus3D 120



##### S-6-S-120: Focus3D-S 120

Laser Scanner Focus3D Multi Sensor 120. Ships with:  
1 Focus3D-S 120, with compass, altimeter (barometer), dual-axis compensator and WLAN, 1 PowerBlock battery, 1 power supply,  
1 laser protection google 1 32GB SD card, 1 SD card reader, 1 SD card cover, 1 rugged transport case, 1 license SCENE software version 5.0.

Please notice: the Leadtime may take 4 - 6 weeks or more after receipt of written order.



##### S-6-S-120-UNI: Focus3D-S 120 - University

Laser Scanner Focus3D Multi Sensor 120. For non-commercial education applications only.  
Ships with:  
1 Focus3D-S 120, with compass, altimeter (barometer), dual-axis compensator and WLAN,  
1 PowerBlock battery, 1 power supply,  
1 laser protection google 1 32GB SD card,  
1 SD card reader, 1 SD card cover,  
1 rugged transport case,  
10 licenses SCENE software version 5.0.

Please notice: the Leadtime may take 2 months or more after receipt of written order.



##### S-6-UPGD-MS: Focus3D-S Upgrade

Upgrade from a Laser Scanner Focus3D to a Focus3D Multi Sensor.  
Ships with: 1 upgrade of a existing Focus3D with an integrated compass, altimeter (barometer) and WLAN. 1 year maintenance contract for SCENE software.

The readings of the compass and the altimeter are recorded by the scanner and stored into each individual scan file. With SCENE version 4.8, these data will be displayed. SCENE version 5.0 will use the data of the compass and the altimeter during the registration. The included software maintenance contract will allow for a free upgrade to version 5.0 as soon as it is available.

Please notice: the Leadtime may take 2 months or more after receipt of written order.

#### Focus3D 20



##### S-6-S-20: Focus3D-S 20

Laser Scanner Focus3D Multi Sensor 20. Ships with:  
1 Focus3D-S 20, with compass, altimeter (barometer), dual-axis compensator and WLAN, 1 PowerBlock battery, 1 power supply,  
1 laser protection google 1 32GB SD card, 1 SD card reader, 1 SD card cover, 1 rugged transport case, 1 license SCENE software version 5.0.

Please notice: the Leadtime may take 2 months or more after receipt of written order.

## Accessories

### Targets

#### Spheres



##### ACCSS0269: SuperSpheres System Kit 1 for Laser Scanner LS

SuperSpheres System Kit 1. Registration spheres for increased accuracy demands. Consists of: 2x SuperSphere 200mm, 1x Special Prism, 3x Tribrach Adapter, 10x Fixing Washers, and 1x Rugged Transport Case



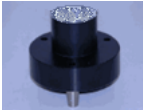
##### ACCSS0270: SuperSpheres System Kit 2 for Laser Scanner LS

SuperSpheres System Kit 2. Registration spheres for increased accuracy demands. Consists of: 2x SuperSphere 200mm, 2x Tribrach Adapter, 10x Fixing Washers, and 1x Rugged Transport Case



##### ACCSS0272: SuperSpheres Large Kit for Laser Scanner LS

SuperSpheres Large Kit. Registration spheres for increased accuracy demands. Consists of: 3x SuperSphere 200mm, 50x Fixing Washers, and 1x Rugged Transport Case



##### ACCSS0273: SuperSphere Tribrach Adapter for Laser Scanner LS

SuperSphere Tribrach Adapter  
Adapter to mount a SuperSphere on Tribrach  
Spare Part



NO PICTURE AVAILABLE

##### ACCSS0285: Laser Scanner - Starter Kit III

Starter Kit III for FARO Laser Scanner. Compatible with the FARO SuperSphere system. Consisting of 5 registration spheres Ø 140mm with magnetic mounts, 5 foldable stands, 20 washers. Starter Kit III comes in a rugged transport case.

#### Prisms



##### ACCSS0211: Prism - spare part for Laser Scanner LS

Prism measuring Registration Sphere locations with total station. -34mm offset. Magnetic mount and thread adapter are NOT included. Spare part.



##### ACCSS0217: Prism Kit for Laser Scanner LS

Prism kit including thread adapter and Magnetic Mount (ACCSS0211 and ACCSS0212) for measuring LS Registration Sphere positions with total station. - horiz offset -34mm; vertical offset 72.5mm.

#### Adaptors



##### ACCSS0207: LS Magnetic Mounts - spare part for Laser Scanner LS

Set of 5 Magnetic Mounts for Mounting of Registration Spheres or prism kit.



[ACCSS0212: Prism Height/Thread Adapter - spare part for Laser Scanner LS](#)

Offset height and thread adapter for Prism for Laser Scanner LS. Spare part.

### Other Targets



[ACCSS0253: Gloves for LS starter kit - spare part](#)

Gloves to handle Laser Scanner registration spheres. Spare part.

## Computers



[ACCSS0267: PC Module for Photon laser scanner to swap with original PC Module](#)

One extra PC module for the PHOTON Laser Scanner in order to exchange with the original PC module to store confidential data in separation from non confidential data. Including one Transport Case.

### Computer Systems



[14881: Apple iPod Touch 8GB](#)

Apple iPod touch with 8GB memory. For use with CAM2 Remote app (available on iTunes). Controls FARO's CAM2 Measure 10 inspection software wirelessly. Connects to CAM2 Measure 10 and later as well as other 3rd party applications and allows users to directly interface with the FARO hardware devices controlling the measurement process.



[COMP0115PL: Notebook-Power User Plus](#)

Notebook-Power User Plus. Notebook computer specifically configured for use with the FARO 3D Imager. Contact your FARO representative for current specifications.



[COMP0115X64: Notebook-Power User 64bit](#)

Notebook-Power User. Power User high-end notebook computer with 64bit OS for use with ScanArm and Laser Scanner systems. Optional upgrade for FaroArm systems. Contact your FARO representative for current specifications.



[COMP0121X64: Notebook-Super Power User, 64bit](#)

Notebook-Super Power User. Top-level notebook computer for use with Laser Scanner, Imager AMP and ScanArm systems. Optional upgrade for FaroArm systems. Contact your FARO representative for current specifications.

### Computing Accessories



[ACCSS0250: SuperMobile LS pda ONLY - EN - no wifi stick](#)

Apple iPod touch with 16GB memory to control the FARO Laser Scanner LS via WiFi. The user interface of the iPod touch is available in the following languages: English, French, German, Japanese, Dutch, Italian, Spanish, Portuguese, Danish, Finnish, Norwegian, Swedish, Korean, Simplified Chinese, Traditional Chinese, Russian, and Polish. [ACCSS0250]



ACCSS0251: SuperMobile LS pda set - EN

Apple iPod touch with 16GB memory to control the FARO Laser Scanner LS via WiFi. Including WiFi stick for the Laser Scanner LS.

The user interface of the iPod touch is available in the following languages: English, French, German, Japanese, Dutch, Italian, Spanish, Portuguese, Danish, Finnish, Norwegian, Swedish, Korean, Simplified Chinese, Traditional Chinese, Russian, and Polish. [ACCSS0251]

## Cables, Cords and Batteries



10630-001: Lemo Connector cable LS - 5m

Lemo connection cable for FARO Laser Scanner LS. Supplies power and communication to scanner. Length 5m. [10630-001]



10630-002: Lemo Connector cable LS - 30m

Lemo connection cable for FARO Laser Scanner LS. Supplies power and communication to scanner. Length 30m. [10630-002]



11826: Power User Notebook Media Drive Bay Auxiliary Battery-Laser Scanner

48 WHr 6-Cell Secondary Media Bay Battery for Power User Notebook almost doubles battery life in the field and approved for use with FARO measurement systems. (Internal optical drive cannot be used in conjunction with battery).



ACCSS0213: A/C Connector box for Laser Scanner LS

Connector Box for the FARO Laser Scanner LS including emergency kill-switch button and ethernet port to communicate with external notebook. To be used with A/C power supply only.



ACCSS0215: A/C Power Supply for Laser Scanner LS

A/C Power supply for connector box of FARO Laser Scanner LS. Outputs 24VDC/4, 1A, Lemo plug. US/EU voltage input compatible.



ACCSS0239: USB camera cable for Laser Scanner LS

USB cable for Laser Scanner Color Option.  
Spare part.



ACCSS0243: PowerBase Battery for Laser Scanner LS

Powerbase battery to run the Laser Scanner LS. To be mounted between the tripod and the Laser Scanner LS by the means of a 5/8 inch thread. Alternatively to be mounted hanging on the tripod. Chargeable only with the charger ACCSS0245.



ACCSS0244: PowerBase Cable for Laser Scanner LS

Connecting cable between PowerBase battery and Laser Scanner LS. Length approx. 50cm.



### Accessories --> Cables, Cords and Batteries



#### ACCSS0245: PowerBase Charger for Laser Scanner LS

Charger for the PowerBase battery ONLY. Not to be used to charge any other battery system.



#### ACCSS0246: PowerBase Kit for Laser Scanner LS

Super mobile battery kit to run the Laser Scanner LS. To be mounted between the tripod and the Laser Scanner LS by the means of a 5/8 inch thread. Alternatively to be mounted hanging on the tripod. Consists of battery and cable. Chargeable only with the charger ACCSS0245 (Not Included).



#### ACCSS0247: PowerBase Charger Kit - full package for Laser Scanner LS

Super mobile battery kit with charger to run the Laser Scanner LS. To be mounted between the tripod and the Laser Scanner LS by the means of a 5/8 inch thread. Alternatively to be mounted hanging on the tripod. Consists of battery, charger and cable.



#### ACCSS0264: PowerBase Charger Kit - full double package for Laser Scanner LS

Two Super mobile battery kits with 2 chargers to run the Laser Scanner LS. To be mounted between the tripod and the Laser Scanner LS by the means of a 5/8" thread. Alternatively to be mounted hanging on the tripod. Consists of 2 batteries, 2 chargers and 2 cables.



#### ACCSS0277: LS Ethernet cable, 8-pole

Ethernet cross-over cable for FARO Laser Scanner LS needed to for scanner/notebook communication. Includes water-resistant connector to be plugged to connector box or battery kit. 3m length.



#### ACCSS6001: Power Block, Focus3D

"Power Block" battery for Laser Scanner Focus3D



#### ACCSS6002: Power Dock, Focus3D

"Power Dock" charging cradle for battery, Laser Scanner Focus3D



#### ACCSS6018: Car Adapter, Focus3D

Car adapter to run the Laser Scanner Focus3D and charge its battery via a standard car power plug.



#### ACCSS6019: Power Supply, Focus3D

Standard power supply for Laser Scanner Focus3D



#### ACCSS6020: QuickCharge Power Supply, Focus3D

Quick charge power supply for Laser Scanner Focus3D



### Accessories --> Cables, Cords and Batteries



NO PICTURE AVAILABLE

#### ACCSS6026: Power Block+Dock Bundle, Focus 3D

"Power Block + Dock" battery and charging cradle for Focus3D



#### ACCSS6027: Power Block+Dock+Charger Bndl

Power Block, charging cradle and quick charge power supply for Focus3D



#### ACCSS6031: Hot-Swap Battery Kit, Focus3D

External battery pack to supply a Focus3D laser scanner while swapping the internal battery. Consists of: 2 battery packs, 1 power supply, 1 cable to connect to Focus3D scanners, 1 mounting strap.



#### K139: Lemo Connector cable LS - 20m

Lemo connection cable for FARO Laser Scanner LS. Supplies power and communication to scanner. Length 20m. [K139]

## Cameras



#### ACCSS0234: Color option - Camera rack D200 only - Laser Scanner LS

Camera rack for NIKON D200 for the parallax free mount. Mount not included (ACCSS0228); Spare part.



#### ACCSS0235: Color option - Camera rack D70s only - Laser Scanner LS

Camera rack for Nikon D70s for the parallax free mount. Mount not included (ACCSS0233); Spare part.



NO PICTURE AVAILABLE

#### ACCSS0254: High End Camera NO accessories for Laser Scanner LS

Nikon Camera - High End Version including kit lens.



NO PICTURE AVAILABLE

#### ACCSS0255: Transport Case High End Camera for Laser Scanner LS

Transport case for high end camera.



NO PICTURE AVAILABLE

#### ACCSS0256: Press-on Mount High End Camera for Laser Scanner LS

Mount for High End Camera. Fixation on the laser scanner by press-on screws. Does NOT contain the High End Camera.



NO PICTURE AVAILABLE

#### ACCSS0257: High End Camera w/o mount for Laser Scanner LS

High End Camera with kit lens. Including fisheye lens and transport case.



### Accessories --> Cameras



#### ACCSS0258: High End Camera Set Press-on for Laser Scanner LS

High End Camera with kit lens, including fisheye lens, press-on mount and case. Enables capturing of colored laser scans.



#### ACCSS0260: Pin Mount UPGRADE for Laser Scanner LS

Upgrade for owners of a former camera mount WITHOUT fixing pins. PREREQUISITE: Scanner needs to have bushings in the side wings of the frame.



#### ACCSS0261: Press-on Mount UPGRADE for Laser Scanner LS

Upgrade for owners of a former camera mount.  
Scope of delivery: Press-on mount for scanners without bushings in the side wings of the frame.



#### ACCSS0262: Pin Mount High End Camera for Laser Scanner LS

Mount for High End Camera. Fixation on the laser scanner by fixing pins. PREREQUISITE: Scanner needs to have bushings in the side wings of the frame. Does NOT contain the High End Camera.



#### ACCSS0263: High End Camera Set Pin Mount for Laser Scanner LS

High End Camera with kit lens, including fisheye lens, fixing-pin mount and case. Enables capturing of colored laser scans. PREREQUISITE: Scanner needs to have bushings in the side wings of the frame.

## Cases and Covers



#### 11796: Heavy Duty Transport LS Case for carbon fiber tripod (ACCSS0232)

Heavy Duty Transport Case for carbon fiber tripod (ACCSS0232).



#### 11797: Heavy Duty Transport LS Case for aluminum tripod (ACCS0214)

Heavy Duty Transport Case for aluminum tripod (ACCS0214).



#### ACCSS0025: LS Scanner Transport Case

Transport Case for LS Scanner including foam kit.



#### ACCSS0226: Rucksack for the Laser Scanner LS

Super Mobile LS Rucksack allows you to conveniently carry the Laser Scanner LS in a padded backpack. Not for shipping use.



#### ACCSS0249: PowerBase Battery Case- spare part for Laser Scanner LS

Rugged transport case with foam inlay for PowerBase Battery, Charger and Cable. (Spare Part).



### Accessories --> Cases and Covers



[ACCSS0252: LS Rugged Sphere Case - spare part](#)

Rugged plastic case with foam inlay to safely transport up to 5 registration spheres. Cases are stackable. Registration spheres not included. Spare part.



[ACCSS0275: LS transport case, large](#)

Large transport case for FARO Laser Scanner. Provides enough space for one scanner (with / without ProCoat), 2 PowerBase batteries, one Color Option and further accessories



[ACCSS6014: Transport Case, Focus3D](#)

Rugged transport case with foam inlay for Laser Scanner Focus3D



[ACCSS6016: Transport Backpack, Focus3D](#)

Transport Backpack for Laser Scanner Focus3D



[ACCSS6023: Transport Case, Hand Luggage, Focus3D](#)

Transport case, hand luggage, Laser Scanner Focus3D



[ACCSS6038: Focus3D, Transport Trolley](#)

Rugged transport trolley with wheels and foam inlay for Laser Scanner Focus3D. Size: ca. 510x285x199mm.

## Mounts

### Base Plates and Mounts



[ACCSS0022: Tribrach Mount for Laser Scanner LS - spare part](#)

Tribrach Mount for Laser Scanner LS - spare part.



[ACCSS6006: Quick Release, Panorama, Focus3D](#)

Quick Release with panoramic disc for Laser Scanner Focus3D



[ACCSS6011: Tribrach with Optical Plummet](#)

Tribrach with optical plummet



[ACCSS6012: Tribrach Adapter, Focus3D](#)

Tribrach adapter for Laser Scanner Focus 3D to mount the scanner onto a wild type tribrach. Integrated height adjustment to a rotating mirror axis height of 196mm.



### Accessories --> Mounts --> Base Plates and Mounts



#### ACCSS6017: Quick Release, Standard, Focus3D

Standard Quick Release for Laser Scanner Focus3D



#### ACCSS6030: Surveyor Kit, Focus3D

Tribrach adapter with integrated height adjustment to a rotating mirror axis height of 196mm and Tribrach with optical plummet for Laser Scanner Focus 3D



#### ACCSS6037: Zero Point Clamp, Focus3D

Zero Point Clamp. Allows for a quick and reproduceable fixation of the Focus3D laser scanning together with the Automation Adapter ACCSS6032. Includes 4 fixation bolts.

## Stands and Tripods



#### ACCSS0232: Tripod - Carbon Fiber tripod w/ crank for Laser Scanner LS

Carbon Fiber Tripod w/ 3 telescoping segments; Max. height: ca. 151cm; Weight: ca. 3kg; Load: max 25kg; Including geared column (20cm) and thread adapter to mount the 5/8" thread of the Laser Scanner LS. Necessary for Color Option.



#### ACCSS0265: Aluminum Laser Scanner LS Tripod, geared column

Telescoping aluminum tripod with a geared center column for Laser Scanner. The adjustable center column has a rugged gear box and a ruler to exactly define the height of the scanner.



#### ACCSS6005: Carbon Fibre Tripod, Compact, Focus3D

High-level carbon fibre tripod for Laser Scanner Focus3D



#### ACCSS6007: Carbon Fibre Tripod, Economy, Focus3D

Economy carbon fibre tripod for Laser Scanner Focus3D



#### ACCSS6028: Carbon Fibre Tripod Kit, Cmpct, Focus3D

High-level carbon fibre tripod including Quick Release with panoramic disc for Laser Scanner Focus3D



#### ACCSS6029: Carbon Fibre Tripod Kit, Eco, Focus3D

Economy carbon fibre tripod including standard Quick Release for Laser Scanner Focus3D

## Adapters and Risers



#### ACCSS0227: LS Mounting Adapter for Faro Laser Tracker tripods

Using this mounting adapter, the Laser Scanner LS can be mounted on any tripod of Faro's Laser Tracker product line.



### Accessories --> Mounts --> Adapters and Risers



#### ACCSS0231: 5/8" Thread adapter for Carbon Fiber tripod for Laser Scanner LS - spare part

Thread adapter to fit a photo tripod thread to the 5/8" thread of the Laser Scanner LS for Carbon Fiber tripod (ACCSS0232). Spare Part.



NO PICTURE AVAILABLE

#### ACCSS6032: Automation Adapter, Focus3D

Automation Adapter for Focus3D.

Provides an Ethernet socket and an automation socket for the Focus3D laser scanner. Includes a test box to verify the proper function of the Automation socket.



NO PICTURE AVAILABLE

#### ACCSS6033: Helical Adapter Upgd.. Focus3D

Upgrade to convert an Automation Adapter for the Focus3D laser scanner into a Helical Adapter.

Two retractable pins on the adapter will hinder the scanner from rotating about the main axis while helical scanning. Includes 2 special scanner brackets with stainless steel precision inlet that will accept the pins to stop rotation of the scanner.



NO PICTURE AVAILABLE

#### ACCSS6034: Helical Adapter, Focus3D

Helical Adapter for Focus3D.

Provides an Ethernet socket and an automation socket for the Focus3D laser scanner.

Two retractable pins on the adapter will hinder the scanner from rotating about the main axis while helical scanning. Includes 2 special scanner brackets with stainless steel precision inlet that will accept the pins to stop rotation of the scanner. Includes a test box to verify the proper function of the Automation socket.



NO PICTURE AVAILABLE

#### ACCSS6035: TMS adapter, Focus3D

Quick-positioning Surveyor Adapter.

Provides an Ethernet socket and an automation socket as well as fixation points for 2 surveyor prisms. Adapter fits into standard surveyor tribrachs.



NO PICTURE AVAILABLE

#### ACCSS6036: Automation Test Box, Focus3D

Test box to verify the proper function of the Automation socket.

## Mount Accessories



#### 11557: Dolly for LS Tripod

Dolly for LS tripod with large, individually braked wheels. Folds for transporting.



#### ACCSS6008: Dolly, Compact

Tripod dolly for carbon fibre tripod ACCSS6005



#### ACCSS6022: Dolly Economy, CF Tripod

Standard tripod dolly for carbon fibre tripods ACCSS6005 and ACCSS6007



## Other Accessories



### 11558: Carrying Handle for Laser Scanner

Heavy Duty fold-away carrying handle specifically designed for FARO Laser Scanner systems.  
Prerequisite: Scanner needs to have a main frame with bushings for the pins (built approx. since July 2007).



### ACCSS0218: SAFETY GLASSES FOR SCANNER LS - eyeglasses fit

SAFETY GLASSES FOR SCANNER LS - eyeglasses fit (use ACCSS0021 for sunglasses style fit).



### ACCSS0230: WLAN USB Stick for Laser Scanner LS

WLAN USB Stick necessary to control the FARO Laser Scanner LS with a PDA or other wireless LAN appliances (IEEE 802.11b/g).



### ACCSS0248: Helical Kit for Laser Scanner LS

Helical Kit to run the Laser Scanner LS in "Helical Mode". Kit consists of synchronisation connector integrated into the PC module and external testing board to test the synchronization signals. Factory service required for upgrades of existing units.



### ACCSS0259: Helical Upgrade Photon for Laser Scanner LS

Helical Upgrade to run the Photon Laser Scanner in "Helical Mode". Consists of activation of the synchronisation interface of the Photon laser scanner, external testing board to test the synchronization signals as well as documentation.



### ACCSS6003: Laser Goggles, Soft Bag, Focus3D

Laser protection goggles for Laser Scanner Focus3D with fabric bag



### ACCSS6004: Laser Goggles, Hard Case, Focus3D

Laser protection goggles for Laser Scanner Focus3D with hard case



### ACCSS6009: SD Card Case

SD Card Memory Case



### ACCSS6010: SD Card, 32GB

SD Card for Laser Scanner Focus3D, 32GB



### ACCSS6013: Optical Cleaning Kit, Focus3D

Mirror and lens cleaning set for Laser Scanner Focus3D



### Accessories --> Other Accessories



ACCSS6021: SD Card Reader, Focus3D  
SD card reader for Laser Scanner Focus3D



NO PICTURE AVAILABLE

ACCSS6024: Optical cleaning liquid, Focus3D  
Optical cleaning liquid for Laser Scanner Focus3D, 2oz



NO PICTURE AVAILABLE

ACCSS6025: Lens Cleaning Tissue, Focus3D  
Lens cleaning tissue in a closeable box for Laser Scanner Focus3D



## Software

### FARO

#### FARO Cloud

##### Program



#### SOFTS0321: FARO Cloud ACAD, Hardlock

FARO Cloud ACAD, Hardlock. To change from softlock to hardlock for single user license. NO software included in this item.



#### SOFTS0321-TR: NOT FOR RESALE - FARO Cloud for AutoCad - USB Hardlock Dongle only

NOT FOR RESALE! - FARO Cloud for AutoCad - USB Hardlock Dongle only. To change from 1 single user softlock to physical hardlock. Gives the user the ability to activate point clouds for Free Edition of FARO Cloud for AutoCAD. Activations sold separately.



#### SOFTS0322-10: FARO Cloud for AutoCad -Point Cloud Activations (10)

FARO Cloud for AutoCad - Point Cloud Activations. Quantity of (10) activations for purpose of unlocking point clouds for Free Edition of FARO Cloud. Hardlock license required.



#### SOFTS0322-20: FARO Cloud for AutoCad -Point Cloud Activations (20)

FARO Cloud for AutoCad - Point Cloud Activations. Quantity of (20) activations for purpose of unlocking point clouds for Free Edition of FARO Cloud. Hardlock license required.



#### SOFTS0322-5: FARO Cloud for AutoCad -Point Cloud Activations (5)

FARO Cloud for AutoCad - Point Cloud Activations. Quantity of (5) activations for purpose of unlocking point clouds for Free Edition of FARO Cloud. Hardlock license required.



#### SOFTS0338: FARO Cloud PRO ACAD, University

Interface for AutoCAD, Pro-Version  
University license  
Network license for 10 users  
Hardlock/Dongle  
Including 5 year maintenance



#### SOFTS0355: FARO Cloud ACD, Dongl, 1yM

Interface for AutoCAD  
Single user license  
Hardlock/Dongle  
including 1 year maintenance



SOFTS0356: FARO Cloud PRO ACD, Dongle, 1yM

Interface for AutoCAD, Pro-Version  
Single user license  
Hardlock/Dongle  
including 1 year maintenance



NO PICTURE AVAILABLE

SOFTS0358: Laser Scanner - PointSense Plant

Interface for AutoCAD dedicated for plant modelling. PointSense Plant provides powerful tools for users needing to analyze, document and model point cloud data in industrial facility settings.  
Single user license  
Hardlock/Dongle  
including 1 year maintenance

### FARO Scene - Record - Scout

#### Program

SMAS0001: SCENE - Maintenance - 1 year



Maintenance for SCENE software. Duration: 1 year.  
Scope of service according to the conditions of the SCENE maintenance contract.

SMAS0002: SCENE - Maintenance - 3 years



Maintenance for SCENE software. Duration: 3 year.  
Scope of service according to the conditions of the SCENE maintenance contract.



SOFTS0334: FARO Scene Extension Forensic

Extension of FARO Scene software with additional features for forensic applications.



SOFTS0334-UNI: FARO Scene Extension Forensic UNI

Extension of FARO Scene software with additional features for forensic applications. University license.



SOFTS0341: FARO Scene, pack of 2

FARO Scene, pack of 2 licenses



SOFTS0342: FARO Scene, pack of 3

FARO Scene, pack of 3 licenses



SOFTS0343: FARO Scene, pack of 5

FARO Scene, pack of 5 licenses



SOFTS0344: FARO Scene, pack of 10

FARO Scene, pack of 10 licenses



SOFTS0345: FARO Scene, pack of 20

FARO Scene, pack of 20 licenses



SOFTS0357: FARO Scene, 1yr

Powerful software to view, analyze, manage and process massive 3D point cloud data.

License is timely limited to 1 calendar year.

Unless the license is cancelled in writing at least 1 calendar month before the end of the license term, the license is automatically prolonged by another year. The license fee will be invoiced automatically.

SOFTS0365: SCENE - Version 5 - First License

## SCENE

SCENE version 5. First License. Software to process data of FARO 3D laser scanners.

SOFTS0366: SCENE - Version 5 - Additional License

## SCENE

SCENE version 5. Additional license. Software to process data of FARO 3D laser scanners. Prerequisite for the reduced price: customer has to own at least one further license of SCENE.

SOFTS0367: SCENE - Version 5 - Upgrade

## SCENE

Upgrade from SCENE version 1, 2, 3 or version 4 to SCENE version 5.

SOFTS0368: SCENE Version 5 - 1 year

## SCENE

SCENE version 5

Software to process data of FARO 3D laser scanners.

License is timely limited to 1 calendar year. Unless the license is cancelled in writing at least 1 calendar month before the end of the license term, the license is automatically prolonged by another year. The license fee will be invoiced automatically.

### Program Maintenance



S-SCENE-1YR: FARO Scene, 1yr ext

Extension of one timely limited license of FARO Scene (SOFTS0357) by one additional year.

Unless the license is cancelled in writing at least 1 calendar month before the end of the license term, the license is automatically prolonged by another year. The license fee will be invoiced automatically.



## Geomagic

### Studio



#### SOFT80013-D: Studio 2012 Dongle

Geomagic Studio - Complete 3D modeling solution for reverse engineering and product design. Creates NURBS surfaces and Parametric CAD models. Dongle licenses are used with any computer, provided the USB Dongle is plugged into the computer.



#### SOFT80013-F: Studio 2012 Network

Geomagic Studio - Complete 3D modeling solution for reverse engineering and product design. Creates NURBS surfaces and Parametric CAD models. Network license for use on multiple computers with access to the network.

### Program



#### SOFT80013-N: Studio 2012 Node

Geomagic Studio - Complete 3D modeling solution for reverse engineering and product design. Creates NURBS surfaces and Parametric CAD models. Node license for use on a single computer.

### Program Maintenance



#### SMA80007-D: Studio 2012 Dongle - Maintenance

1 year of maintenance for Studio 2012 Dongle



#### SMA80007-F: Studio 2012 Network - Maintenance

1 year of maintenance for Studio 2012 Network



#### SMA80007-N: Studio 2012 Node - Maintenance

1 year of maintenance for Studio 2012 Node



#### SMA80025-ST-D: Studio 2012 Education Dongle - Maintenance

1 year of maintenance for Studio 2012 Education Dongle



#### SMA80025-ST-F: Studio 2012 Education Network - Maintenance

1 year of maintenance for Studio 2012 Education Network



#### SMA80025-ST-FX10: Studio 2012 Education Network 10 pack - Maintenance

1 year of maintenance for Studio 2012 Education Network 10 pack



SMA80025-ST-FX20: Studio 2012 Education Network 20 pack - Maintenance

1 year of maintenance for Studio 2012 Education Network 20 pack



SMA80025-ST-FX5: Studio 2012 Education Network 5 pack - Maintenance

1 year of maintenance for Studio 2012 Education Network 5 pack



SMA80025-ST-FX50: Studio 2012 Education Network 50 pack - Maintenance

1 year of maintenance for Studio 2012 Education Network 50 pack



SMA80025-ST-N: Studio 2012 Education Node - Maintenance

1 year of maintenance for Studio 2012 Education Node



SMA80025-ST-NX10: Studio 2012 Education Node 10 pack - Maintenance

1 year of maintenance for Studio 2012 Education Node 10 pack



SMA80025-ST-NX20: Studio 2012 Education Node 20 pack - Maintenance

1 year of maintenance for Studio 2012 Education Node 20 pack



SMA80025-ST-NX5: Studio 2012 Education Node 5 pack - Maintenance

1 year of maintenance for Studio 2012 Education Node 5 pack



SMA80025-ST-NX50: Studio 2012 Education Node 50 pack - Maintenance

1 year of maintenance for Studio 2012 Education Node 50 pack

### Qualify



SOFT80003-D: Qualify 2012 Dongle

Enables fast, easy-to-understand graphical comparisons between CAD models and as-built parts for first-article inspection, inline or shop-floor inspection, trend analysis and in-depth assessment. Dongle licenses are used with any computer, provided the US



SOFT80003-F: Qualify 2012 Network

Enables fast, easy-to-understand graphical comparisons between CAD models and as-built parts for first-article inspection, inline or shop-floor inspection, trend analysis and in-depth assessment. Network licenses provide access to any computer that is con



SOFT80003-N: Qualify 2012 Node

Enables fast, easy-to-understand graphical comparisons between CAD models and as-built parts for first-article inspection, inline or shop-floor inspection, trend analysis and in-depth assessment. Node license for use on a single computer.



SOFT80003-QP-D: Qualify Probe 2012 Dongle

Geomagic Qualify Probe delivers the most easy-to-use, affordable, 3D inspection software that works exclusively with probing data, reporting on the quality of as-built parts for first-article and production inspection, and supplier management. Dongle licenses are used with any computer, provided the USB Dongle is plugged into the computer.

### Program



SOFT80003-QP-F: Qualify Probe 2012 Network

Geomagic Qualify Probe delivers the most easy-to-use, affordable, 3D inspection software that works exclusively with probing data, reporting on the quality of as-built parts for first-article and production inspection, and supplier management. Network licenses provide access to any computer that is connected to the network server.



SOFT80003-QP-N: Qualify Probe 2012 Node

Geomagic Qualify Probe delivers the most easy-to-use, affordable, 3D inspection software that works exclusively with probing data, reporting on the quality of as-built parts for first-article and production inspection, and supplier management. Node-locked licenses are used with a single computer

### Program Maintenance



SMA80002: Maintenance 1 Year - Qualify - Node

Maintenance 1 Year - Qualify - Node



SMA80002-D: Qualify 2012 Dongle - Maintenance 1 year

1 year of maintenance for Qualify 2012 Dongle



SMA80002-F: Qualify 2012 Network - Maintenance 1 year

1 year of maintenance for Qualify 2012 Network



SMA80002-N: Qualify 2012 Node - Maintenance 1st year

1 year of maintenance for Qualify 2012 Node



SMA80002-QP-D: Qualify Probe 2012 Dongle - Maintenance 1st Year

Maintenance provides access to world-class technical support by telephone and email, access to online Knowledge Base, videos and downloads, software release updates and major upgrades.



SMA80002-QP-F: Qualify Probe 2012 Network - Maintenance 1st Year

Maintenance provides access to world-class technical support by telephone and email, access to online Knowledge Base, videos and downloads, software release updates and major upgrades.



SMA80002-QP-N: Qualify Probe 2012 Node - Maintenance 1st Year

Maintenance provides access to world-class technical support by telephone and email, access to online Knowledge Base, videos and downloads, software release updates and major upgrades.



SMA80025-QU-D: Qualify 2012 Education Dongle - Maintenance

1 year of maintenance for Qualify 2012 Education Dongle



SMA80025-QU-F: Qualify 2012 Education Network - Maintenance

1 year of maintenance for Qualify 2012 Education Network



SMA80025-QU-FX10: Qualify 2012 Education Network 10 pack - Maintenance

1 year of maintenance for Qualify 2012 Education Network 10 pack



SMA80025-QU-FX20: Qualify 2012 Education Network 20 pack - Maintenance

1 year of maintenance for Qualify 2012 Education Network 20 pack



SMA80025-QU-FX5: Qualify 2012 Education Network 5 pack - Maintenance

1 year of maintenance for Qualify 2012 Education Network 5 pack



SMA80025-QU-FX50: Qualify 2012 Education Network 50 pack - Maintenance

1 year of maintenance for Qualify 2012 Education Network 50 pack



SMA80025-QU-N: Qualify 2012 Education Node - Maintenance

1 year of maintenance for Qualify 2012 Education Node



SMA80025-QU-NX10: Qualify 2012 Education Node 10 pack - Maintenance

1 year of maintenance for Qualify 2012 Education Node 10 pack



SMA80025-QU-NX20: Qualify 2012 Education Node 20 pack - Maintenance

1 year of maintenance for Qualify 2012 Education Node 20 pack



SMA80025-QU-NX5: Qualify 2012 Education Node 5 pack - Maintenance

1 year of maintenance for Qualify 12 Education Node 5 pack



SMA80025-QU-NX50: Qualify 2012 Education Node 50 pack - Maintenance

1 year of maintenance for Qualify 2012 Education Node 50 pack

### Wrap



SOFT80001-D: Wrap 2012 Dongle

Point and polygon processing software includes tools for cleaning up and merging scan data and for creating polygon meshes. Suitable for creating watertight models for rapid prototyping and digital manufacturing. Dongle licenses are used with any computer



SOFT80001-F: Wrap 2012 Network

Point and polygon processing software includes tools for cleaning up and merging scan data and for creating polygon meshes. Suitable for creating watertight models for rapid prototyping and digital manufacturing. Network licenses provide access to any com



SOFT80001-N: Wrap 2012 Node

Point and polygon processing software includes tools for cleaning up and merging scan data and for creating polygon meshes. Suitable for creating watertight models for rapid prototyping and digital manufacturing. Node license for use on a single computer

### Program Maintenance



SMA80001: Maintenance 1 Year - Wrap - Node

Maintenance 1 Year - Wrap - Node



SMA80001-D: Wrap 2012 Dongle - Maintenance 1 Year

1 year of maintenance for Wrap 2012 Dongle



SMA80001-F: Wrap 2012 Network - Maintenance 1 Year

1 year of maintenance for Wrap 2012 Network



SMA80001-N: Wrap 2012 Node - Maintenance 1 Year

1 year of maintenance for Wrap 12 Node



### Blade

#### Program Maintenance



##### SMA80014-D: Blade 12 Dongle - Maintenance

1 year of maintenance for Blade 12 Dongle



##### SMA80014-F: Blade 12 Network - Maintenance

1 year of maintenance for Blade 12 Network



##### SMA80014-N: Blade 12 Node - Maintenance

1 year of maintenance for Blade 12 Node



##### SOFT80024-D: Blade 12 Dongle

Add-on to Geomagic Quality for evaluating, testing and qualifying turbine blades, rotors, stators and components. Dongle licenses are used with any computer, provided the USB Dongle is plugged into the computer.



##### SOFT80024-F: Blade 12 Network

Add-on to Geomagic Quality for evaluating, testing and qualifying turbine blades, rotors, stators and components. Network licenses provide access to any computer that is connected to the network server.



##### SOFT80024-N: Blade 12 Node

Add-on to Geomagic Quality for evaluating, testing and qualifying turbine blades, rotors, stators and components. Node license for use on a single computer.

### Educational



##### SOFT80038-D: Studio 2012 Education Dongle

Geomagic Studio - Complete 3D modeling solution for reverse engineering and product design. Creates NURBS surfaces and Parametric CAD models. Dongle licenses are used with any computer, provided the USB Dongle is plugged into the computer.



##### SOFT80038-F: Studio 2012 Education Network

Geomagic Studio - Complete 3D modeling solution for reverse engineering and product design. Creates NURBS surfaces and Parametric CAD models. Network licenses provide access to any computer that is connected to the network server.



##### SOFT80038-FX10: Studio 2012 Education Network 10 pack

Geomagic Studio - Complete 3D modeling solution for reverse engineering and product design. Creates NURBS surfaces and Parametric CAD models. Network licenses provide access to any computer that is connected to the network server.



[SOFT80038-FX20: Studio 2012 Education Network 20 pack](#)

Geomagic Studio - Complete 3D modeling solution for reverse engineering and product design. Creates NURBS surfaces and Parametric CAD models. Network licenses provide access to any computer that is connected to the network server.



[SOFT80038-FX5: Studio 2012 Education Network 5 pack](#)

Geomagic Studio - Complete 3D modeling solution for reverse engineering and product design. Creates NURBS surfaces and Parametric CAD models. Network licenses provide access to any computer that is connected to the network server.



[SOFT80038-FX50: Studio 2012 Education Network 50 pack](#)

Geomagic Studio - Complete 3D modeling solution for reverse engineering and product design. Creates NURBS surfaces and Parametric CAD models. Network licenses provide access to any computer that is connected to the network server.



[SOFT80038-N: Studio 2012 Education Node](#)

Enables fast, easy-to-understand graphical comparisons between CAD models and as-built parts for first-article inspection, inline or shop-floor inspection, trend analysis and in-depth assessment. Node license for use on a single computer.



[SOFT80038-NX10: Studio 2012 Education Node 10 pack](#)

Enables fast, easy-to-understand graphical comparisons between CAD models and as-built parts for first-article inspection, inline or shop-floor inspection, trend analysis and in-depth assessment. Node license for use on a single computer.



[SOFT80038-NX20: Studio 2012 Education Node 20 pack](#)

Enables fast, easy-to-understand graphical comparisons between CAD models and as-built parts for first-article inspection, inline or shop-floor inspection, trend analysis and in-depth assessment. Node license for use on a single computer.



[SOFT80038-NX5: Studio 2012 Education Node 5 pack](#)

Enables fast, easy-to-understand graphical comparisons between CAD models and as-built parts for first-article inspection, inline or shop-floor inspection, trend analysis and in-depth assessment. Node license for use on a single computer.



[SOFT80038-NX50: Studio 2012 Education Node 50 pack](#)

Enables fast, easy-to-understand graphical comparisons between CAD models and as-built parts for first-article inspection, inline or shop-floor inspection, trend analysis and in-depth assessment. Node license for use on a single computer.



[SOFT80040-D: Qualify 2012 Education Dongle](#)

Enables fast, easy-to-understand graphical comparisons between CAD models and as-built parts for first-article inspection, inline or shop-floor inspection, trend analysis and in-depth assessment. Dongle licenses are used with any computer, provided the US



[SOFT80040-F: Qualify 2012 Education Network](#)

Enables fast, easy-to-understand graphical comparisons between CAD models and as-built parts for first-article inspection, inline or shop-floor inspection, trend analysis and in-depth assessment. Network licenses provide access to any computer that is con



[SOFT80040-FX10: Qualify 2012 Education Network 10 pack](#)

Enables fast, easy-to-understand graphical comparisons between CAD models and as-built parts for first-article inspection, inline or shop-floor inspection, trend analysis and in-depth assessment. Network licenses provide access to any computer that is con



[SOFT80040-FX20: Qualify 2012 Education Network 20 pack](#)

Enables fast, easy-to-understand graphical comparisons between CAD models and as-built parts for first-article inspection, inline or shop-floor inspection, trend analysis and in-depth assessment. Network licenses provide access to any computer that is con



[SOFT80040-FX5: Qualify 2012 Education Network 5 pack](#)

Enables fast, easy-to-understand graphical comparisons between CAD models and as-built parts for first-article inspection, inline or shop-floor inspection, trend analysis and in-depth assessment. Network licenses provide access to any computer that is con



[SOFT80040-FX50: Qualify 2012 Education Network 50 pack](#)

Enables fast, easy-to-understand graphical comparisons between CAD models and as-built parts for first-article inspection, inline or shop-floor inspection, trend analysis and in-depth assessment. Network licenses provide access to any computer that is con



[SOFT80040-N: Qualify 2012 Education Node](#)

Enables fast, easy-to-understand graphical comparisons between CAD models and as-built parts for first-article inspection, inline or shop-floor inspection, trend analysis and in-depth assessment. Node license for use on a single computer.



[SOFT80040-NX10: Qualify 2012 Education Node 10 pack](#)

Enables fast, easy-to-understand graphical comparisons between CAD models and as-built parts for first-article inspection, inline or shop-floor inspection, trend analysis and in-depth assessment. Node license for use on a single computer.



[SOFT80040-NX20: Qualify 2012 Education Node 20 pack](#)

Enables fast, easy-to-understand graphical comparisons between CAD models and as-built parts for first-article inspection, inline or shop-floor inspection, trend analysis and in-depth assessment. Node license for use on a single computer.



[SOFT80040-NX5: Qualify 2012 Education Node 5 pack](#)

Enables fast, easy-to-understand graphical comparisons between CAD models and as-built parts for first-article inspection, inline or shop-floor inspection, trend analysis and in-depth assessment. Node license for use on a single computer.



[SOFT80040-NX50: Qualify 2012 Education Node 50 pack](#)

Enables fast, easy-to-understand graphical comparisons between CAD models and as-built parts for first-article inspection, inline or shop-floor inspection, trend analysis and in-depth assessment. Node license for use on a single computer.

### Bundle



[SOFT80015-D-UG: Upgrade Bundle Studio & Qualify 2012 Dongle](#)

Upgrade from previous version to latest version of Studio and Qualify Dongle. Geomagic Studio reverse engineering software, transforms 3D scan data and polygon meshes into accurate 3D digital models for reverse engineering, product design, rapid prototyping and engineering analysis. Geomagic Qualify inspection software, enables fast, easy-to-understand graphical comparisons between CAD models and as-built parts for first-article inspection, inline or shop-floor and in-depth assessment. Dongle licenses are used with any computer, provided the USB Dongle is plugged into the computer.



[SOFT80015-F-UG: Upgrade Bundle Studio & Qualify 2012 Dongle](#)

Upgrade from previous version to latest version of Studio and Qualify Network. Geomagic Studio reverse engineering software, transforms 3D scan data and polygon meshes into accurate 3D digital models for reverse engineering, product design, rapid prototyping and engineering analysis. Geomagic Qualify inspection software, enables fast, easy-to-understand graphical comparisons between CAD models and as-built parts for first-article inspection, inline or shop-floor inspection, trend analysis and in-depth assessment. Network licenses provide access to any computer that is connected to the network server.



[SOFT80042-D: Bundle Studio & Qualify 2012 Education Dongle](#)

Geomagic Studio - Ideal for mechanical designers who want to extract design intent from existing objects for use in CAD and also want to perform FEA and CFD analysis on as-built parts. Geomagic Qualify enables fast, easy-to-understand graphical comparison



[SOFT80042-F: Bundle Studio & Qualify 2012 Education Network](#)

Geomagic Studio - Ideal for mechanical designers who want to extract design intent from existing objects for use in CAD and also want to perform FEA and CFD analysis on as-built parts. Geomagic Qualify enables fast, easy-to-understand graphical comparison



[SOFT80042-FX10: Bundle Studio & Qualify 2012 Education Network 10 pack](#)

Geomagic Studio - Ideal for mechanical designers who want to extract design intent from existing objects for use in CAD and also want to perform FEA and CFD analysis on as-built parts. Geomagic Qualify enables fast, easy-to-understand graphical comparison



[SOFT80042-FX20: Bundle Studio & Qualify 2012 Education Network 20 pack](#)

Geomagic Studio - Ideal for mechanical designers who want to extract design intent from existing objects for use in CAD and also want to perform FEA and CFD analysis on as-built parts. Geomagic Qualify enables fast, easy-to-understand graphical comparison



[SOFT80042-FX5: Bundle Studio & Qualify 2012 Education Network 5 pack](#)

Geomagic Studio - Ideal for mechanical designers who want to extract design intent from existing objects for use in CAD and also want to perform FEA and CFD analysis on as-built parts. Geomagic Qualify enables fast, easy-to-understand graphical comparison



[SOFT80042-FX50: Bundle Studio & Qualify 2012 Education Network 50 pack](#)

Geomagic Studio - Ideal for mechanical designers who want to extract design intent from existing objects for use in CAD and also want to perform FEA and CFD analysis on as-built parts. Geomagic Qualify enables fast, easy-to-understand graphical comparison



[SOFT80042-N: Bundle Studio & Qualify 2012 Education Node](#)

Geomagic Studio - Ideal for mechanical designers who want to extract design intent from existing objects for use in CAD and also want to perform FEA and CFD analysis on as-built parts. Geomagic Qualify enables fast, easy-to-understand graphical comparison



[SOFT80042-NX10: Bundle Studio & Qualify 2012 Education Node 10 pack](#)

Geomagic Studio - Ideal for mechanical designers who want to extract design intent from existing objects for use in CAD and also want to perform FEA and CFD analysis on as-built parts. Geomagic Qualify enables fast, easy-to-understand graphical comparison



[SOFT80042-NX20: Bundle Studio & Qualify 2012 Education Node 20 pack](#)

Geomagic Studio - Ideal for mechanical designers who want to extract design intent from existing objects for use in CAD and also want to perform FEA and CFD analysis on as-built parts. Geomagic Qualify enables fast, easy-to-understand graphical comparison



[SOFT80042-NX5: Bundle Studio & Qualify 2012 Education Node 5 pack](#)

Geomagic Studio - Ideal for mechanical designers who want to extract design intent from existing objects for use in CAD and also want to perform FEA and CFD analysis on as-built parts. Geomagic Qualify enables fast, easy-to-understand graphical comparison



[SOFT80042-NX50: Bundle Studio & Qualify 2012 Education Node 50 pack](#)

Geomagic Studio - Ideal for mechanical designers who want to extract design intent from existing objects for use in CAD and also want to perform FEA and CFD analysis on as-built parts. Geomagic Qualify enables fast, easy-to-understand graphical comparison

### Program



[SOFT80015-D: Bundle Studio & Qualify 2012 Dongle](#)

Geomagic Studio - Ideal for mechanical designers who want to extract design intent from existing objects for use in CAD and also want to perform FEA and CFD analysis on as-built parts. Geomagic Qualify enables fast, easy-to-understand graphical comparison



[SOFT80015-F: Bundle Studio & Qualify 2012 Network](#)

Geomagic Studio - Ideal for mechanical designers who want to extract design intent from existing objects for use in CAD and also want to perform FEA and CFD analysis on as-built parts. Geomagic Qualify enables fast, easy-to-understand graphical comparison



[SOFT80015-N: Bundle Studio & Qualify 2012 Node](#)

Geomagic Studio - Ideal for mechanical designers who want to extract design intent from existing objects for use in CAD and also want to perform FEA and CFD analysis on as-built parts. Geomagic Qualify enables fast, easy-to-understand graphical comparison



[SOFT80015-N-UG: Upgrade Bundle Studio & Qualify 2012 Node](#)

Upgrade from previous version to latest version of Studio and Qualify Node. Geomagic Studio reverse engineering software, transforms 3D scan data and polygon meshes into accurate 3D digital models for reverse engineering, product design, rapid prototyping and engineering analysis. Geomagic Qualify inspection software, enables fast, easy-to-understand graphical comparisons between CAD models and as-built parts for first-article inspection, inline or shop-floor inspection, trend analysis and in-depth assessment. Node-locked licenses are used with a single computer.

### Program Maintenance



[SMA80008-D: Bundle Studio & Qualify 2012 Dongle - Maintenance](#)

1 year of maintenance for Bundle Studio & Qualify 2012 Dongle



[SMA80008-F: Bundle Studio & Qualify 2012 Network - Maintenance](#)

1 year of maintenance for Bundle Studio & Qualify 12 Network



[SMA80008-N: Bundle Studio & Qualify 2012 Node - Maintenance](#)

1 year of maintenance for Bundle Studio & Qualify 12 Node



[SMA80025-SQ-D: Bundle Studio & Qualify 2012 Education Dongle - Maintenance](#)

1 year of maintenance for Bundle Studio & Qualify 12 Education Dongle



[SMA80025-SQ-F: Bundle Studio & Qualify 2012 Education Network - Maintenance](#)

1 year of maintenance for Bundle Studio & Qualify 12 Education Network



[SMA80025-SQ-FX10: Bundle Studio & Qualify 2012 Education Network 10 pack - Maintenance](#)

1 year of maintenance for Bundle Studio & Qualify 2012 Education Network 10 pack



[SMA80025-SQ-FX20: Bundle Studio & Qualify 2012 Education Network 20 pack - Maintenance](#)

1 year of maintenance for Bundle Studio & Qualify 2012 Education Network 20 pack



[SMA80025-SQ-FX5: Bundle Studio & Qualify 2012 Education Network 5 pack - Maintenance](#)

1 year of maintenance for Bundle Studio & Qualify 2012 Education Network 5 pack

# FARO Product Catalog

FARO Laser Scanner

English - US



Software --> Geomagic --> Bundle --> Program Maintenance



SMA80025-SQ-FX50: Bundle Studio & Qualify 2012 Education Network 50 pack - Maintenance

1 year of maintenance for Bundle Studio & Qualify 2012 Education Network 50 pack



SMA80025-SQ-N: Bundle Studio & Qualify 2012 Education Node - Maintenance

1 year of maintenance for Bundle Studio & Qualify 12 Education Node



SMA80025-SQ-NX10: Bundle Studio & Qualify 2012 Education Node 10 pack - Maintenance

1 year of maintenance for Bundle Studio & Qualify 2012 Education Node 10 pack



SMA80025-SQ-NX20: Bundle Studio & Qualify 2012 Education Node 20 pack - Maintenance

1 year of maintenance for Bundle Studio & Qualify 2012 Education Node 20 pack



SMA80025-SQ-NX5: Bundle Studio & Qualify 2012 Education Node 5 pack - Maintenance

1 year of maintenance for Bundle Studio & Qualify 2012 Education Node 5 pack



SMA80025-SQ-NX50: Bundle Studio & Qualify 2012 Education Node 50 pack - Maintenance

1 year of maintenance for Bundle Studio & Qualify 12 Education Node 50 pack

## Common



SOFT80046: USB Replacement Dongle/Portlock (For Node only - optional)

Geomagic Replacement USB Dongle/Portlock

## CAD Translators



SOFT80026-D: Catia V CAD Importer Dongle

CAD Importer Catia V5 Dongle licenses are used with any computer, provided the USB Dongle is plugged into the computer.



SOFT80026-F: Catia V CAD Importer Network

CAD Importer Catia V5 Network licenses provide access to any computer that is connected to the network server.



SOFT80026-N: Catia V CAD Importer Node

CAD Importer Catia V5 Node licenses are used with a single computer.



[SOFT80028-D: Catia IV CAD Importer Dongle](#)

CAD Importer Catia V4Dongle licenses are used with any computer, provided the USB Dongle is plugged into the computer.



[SOFT80028-F: Catia IV CAD Importer Network](#)

CAD Importer Catia V4 Network licenses provide access to any computer that is connected to the network server.



[SOFT80028-N: Catia IV CAD Importer Node](#)

CAD Importer Catia V4 Node licenses are used with a single computer.



[SOFT80030-D: Unigraphics CAD Importer Dongle](#)

CAD Importer Unigraphics Dongle licenses are used with any computer, provided the USB Dongle is plugged into the computer.



[SOFT80030-F: Unigraphics CAD Importer Network](#)

CAD Importer Unigraphics Network licenses provide access to any computer that is connected to the network server.



[SOFT80030-N: Unigraphics CAD Importer Node](#)

CAD Importer Unigraphics Node licenses are used with a single computer.



[SOFT80032-D: SolidWorks CAD Importer Dongle](#)

CAD Importer SolidWorks Dongle licenses are used with any computer, provided the USB Dongle is plugged into the computer.



[SOFT80032-F: SolidWorks CAD Importer Network](#)

CAD Importer SolidWorks Network licenses provide access to any computer that is connected to the network server.



[SOFT80032-N: SolidWorks CAD Importer Node](#)

CAD ImporterSolidWorks Node licenses are used with a single computer.

### CAD Translator Maintenance



[SMA80015-D: Catia V CAD Importer Dongle - Maintenance](#)

1 year of maintenance for Catia V CAD Importer Dongle



[SMA80015-F: Catia V CAD Importer Network - Maintenance](#)

1 year of maintenance for Catia V CAD Importer Network



SMA80015-N: Catia V CAD Importer Node - Maintenance

1 year of maintenance for Catia V CAD Importer Node



SMA80017-D: Catia IV CAD Importer Dongle - Maintenance

1 year of maintenance for Catia IV CAD Importer Dongle



SMA80017-F: Catia IV CAD Importer Network - Maintenance

1 year of maintenance for Catia IV CAD Importer Network



SMA80017-N: Catia IV CAD Importer Node - Maintenance

1 year of maintenance for Catia IV CAD Importer Node



SMA80019-D: Unigraphics CAD Importer Dongle - Maintenance

1 year of maintenance for Unigraphics CAD Importer Dongle



SMA80019-F: Unigraphics CAD Importer Network - Maintenance

1 year of maintenance for Unigraphics CAD Importer Network



SMA80019-N: Unigraphics CAD Importer Node - Maintenance

1 year of maintenance for Unigraphics CAD Importer Node



SMA80020-D: SolidWorks CAD Importer Dongle - Maintenance

1 year of maintenance for SolidWorks CAD Importer Dongle



SMA80020-F: SolidWorks CAD Importer Network - Maintenance

1 year of maintenance for SolidWorks CAD Importer Network



SMA80020-N: SolidWorks CAD Importer Node - Maintenance

1 year of maintenance for SolidWorks CAD Importer Node



## Gexcel

### JRC 3D Reconstructor

#### Program



SOFT70004: Reconstructor Constr.

JRC 3D Reconstructor Construction, single user license.  
Software includes 1st year of maintenance.



SOFT70005: Reconstructor Constr. Add.

JRC 3D Reconstructor Construction, additional single user license.  
Requires 1 single user license SOFT70004.  
Software includes 1st year of maintenance.



SOFT70006: Reconstructor Arm

JRC 3D Reconstructor Arm, single user license.  
Software includes 1st year of maintenance.



SOFT70007: Reconstructor Arm Add.

JRC 3D Reconstructor Arm, additional single user license.  
Requires 1 single user license SOFT70006.  
Software includes 1st year of maintenance.



SOFT70008: Reconstructor Full

JRC 3D Reconstructor Full, single user license.  
Software includes 1st year of maintenance.



SOFT70009: Reconstructor Full server

JRC 3D Reconstructor Full, server license for 1 user.  
Software includes 1st year of maintenance.



SOFT70010: Reconstructor Full Add.

JRC 3D Reconstructor Full, additional network user license.  
Requires server license SOFT70009.  
Software includes 1st year of maintenance.



SOFT70011: Reconstructor Full Uni

JRC 3D Reconstructor Full, single user license for educational use.  
Software includes 1st year of maintenance.



SOFT70012: Reconstructor Full Uni server

JRC 3D Reconstructor Full, single user license for educational use.  
Software includes 1st year of maintenance.



SOFT70013: Reconstructor Full Uni Add.

JRC 3D Reconstructor Full, additional user license for educational use.  
Requires educational server license SOFT70012.  
Software includes 1st year of maintenance.



SOFT70014: Reconstructor Heritage

JRC 3D Reconstructor Heritage, single user license.  
Software includes 1st year of maintenance.



SOFT70015: Reconstructor Heritage Add.

JRC 3D Reconstructor Heritage, additional single user license.  
Requires 1 single user license SOFT70014.  
Software includes 1st year of maintenance.



SOFT70016: Reconstructor Mining

JRC 3D Reconstructor Mining, single user license.  
Includes 1st year of maintenance.



SOFT70017: Reconstructor Mining Add.

JRC 3D Reconstructor Mining, additional single user license.  
Requires 1 single user license SOFT70016.  
Includes 1st year of maintenance.



SOFT80115: Reconstructor CONTROL module

JRC 3D Reconstructor module CONTROL.

ATTENTION: requires the CORE module

Main features:

- Controls FARO Photon laser scanners
- Controls various cameras (i.e. Nikon, Canon)
- Use of lenses with various focal lengths

Software includes 1st year of maintenance.



## InnovMetric

### Polyworks Bundle

#### Program



#### SOFT90001-F: PolyWorks/Modeler & Inspector™ + NURBS Surfacing Module (Float)

PolyWorks/Modeler & Inspector™ + NURBS Surfacing Module including IMAAlign™, IMMerge™, IMEdit™, NURBS Surfacing Module, IMCompress™, IMInspect™, IGES and STEP (Float) Includes 1 year mandatory support/ maintenance contract . 1 mandatory dongle (hardware key - USB port). Optional FREE 5-day 'basic' training (STR90001) on PolyWorks/Modeler&Inspector package, at InnovMetric (Quebec City) for two trainees.



#### SOFT90001-N: PolyWorks/Modeler & Inspector™ + NURBS Surfacing Module (Node)

PolyWorks/Modeler & Inspector™ + NURBS Surfacing Module including IMAAlign™, IMMerge™, IMEdit™, NURBS Surfacing Module, IMCompress™, IMInspect™, IGES and STEP (Node) Includes 1 year mandatory support/ maintenance contract . 1 mandatory dongle (hardware key - USB port). Optional FREE 5-day 'basic' training (STR90001) on PolyWorks/Modeler&Inspector package, at InnovMetric (Quebec City) for two trainees.



#### SOFT90002-F: PolyWorks/Modeler & Inspector™ (Float)

PolyWorks/Modeler & Inspector™ including IMAAlign™, IMMerge™, IMEdit™, IMCompress™, IMInspect™, IGES and STEP (Float). Includes 1 year mandatory support/ maintenance contract . 1 mandatory dongle (hardware key - USB port). Optional FREE 5-day 'basic' training (STR90001) on PolyWorks/Modeler&Inspector package, at InnovMetric (Quebec City) for two trainees.



#### SOFT90002-N: PolyWorks/Modeler & Inspector™ (Node)

PolyWorks/Modeler & Inspector™ including IMAAlign™, IMMerge™, IMEdit™, IMCompress™, IMInspect™, IGES and STEP (Node). Includes 1 year mandatory support/ maintenance contract . 1 mandatory dongle (hardware key - USB port). Optional FREE 5-day 'basic' training (STR90001) on PolyWorks/Modeler&Inspector package, at InnovMetric (Quebec City) for two trainees.

#### Program Maintenance



#### SMA90001: PolyWorks/Modeler & Inspector™ + NURBS Support Contract Renewal (Node or Float)

PolyWorks/Modeler & Inspector™ + NURBS Surfacing Module. Support Contract Renewal for the renewal of annual support/maintenance contracts for each subsequent year (after the first year). (Node or Float)



#### SMA90002: PolyWorks/Modeler & Inspector™ Support Contract Renewal (Node or Float)

PolyWorks/Modeler & Inspector™ Support Contract Renewal for the renewal of annual support/maintenance contracts for each subsequent year (after the first year). (Node or Float)

### Polyworks Inspector

#### Program



#### SOFT90006-F: PolyWorks/Inspector with IMAAlign™ (Float)

1PolyWorks/Inspector™ + Meshing™ (Float) including IMInspect™, IMAAlign™, IMMerge™, IGES and STEP. Includes 1 year mandatory support/ maintenance contract . 1 mandatory dongle (hardware key - USB port). Optional FREE 3-day 'basic' training (STR90002) on PolyWorks/Inspector package, at InnovMetric (Quebec City). 'Classroom type' training at pre-determined dates. Up to TWO trainees.



SOFT90006-N: PolyWorks/Inspector with IMAAlign™ (Node)

PolyWorks/Inspector™ + Meshing™ (Node) including IMInspect™, IMAAlign™, IMMerge™, IGES and STEP. Includes 1 year mandatory support/ maintenance contract . 1 mandatory dongle (hardware key - USB port). Optional FREE 3-day 'basic' training (STR90002) on PolyWorks/Inspector package, at InnovMetric (Quebec City). 'Classroom type' training at pre-determined dates. Up to TWO trainees.



SOFT90007-F: PolyWorks/Inspector™ (Float)

PolyWorks/Inspector™ (Float) including IMInspect™, IGES and STEP. Includes 1 year mandatory support/ maintenance contract . 1 mandatory dongle (hardware key - USB port). Optional FREE 3-day 'basic' training (STR90002) on PolyWorks/Inspector package, at InnovMetric (Quebec City). 'Classroom type' training at pre-determined dates. Up to TWO trainees.



SOFT90007-N: PolyWorks/Inspector™ (Node)

PolyWorks/Inspector™ (Node) including IMInspect™, IGES and STEP. Includes 1 year mandatory support/ maintenance contract . 1 mandatory dongle (hardware key - USB port). Optional FREE 3-day 'basic' training (STR90002) on PolyWorks/Inspector package, at InnovMetric (Quebec City). 'Classroom type' training at pre-determined dates. Up to TWO trainees.



SOFT90008-F: PolyWorks/Inspector™ Airfoil Gauge Module (Float)

Optional module for PolyWorks/Inspector licenses. (Float). \*Customer should already own or purchase a PolyWorks/Inspector license (PWIMSH, PWI, PWMI or PWMIN). (When ordering PWAf, please apply same basic discount as for ordering 'CAD translators'.)



SOFT90008-N: PolyWorks/Inspector™ Airfoil Gauge Module (Node)

Optional module for PolyWorks/Inspector licenses (Node). \*Customer should already own or purchase a PolyWorks/Inspector license (PWIMSH, PWI, PWMI or PWMIN). (When ordering PWAf, please apply same basic discount as for ordering 'CAD translators'.)

### Program Maintenance



SMA90006: PolyWorks/Inspector with IMAAlign™ Support Contract Renewal Node-Locked

PolyWorks/Inspector™ with Meshing Support Contract Renewal for the renewal of annual support/maintenance contracts for each subsequent year (after the first year). (Node or Float)



SMA90007: PolyWorks/Inspector™ Support Contract Renewal (Node or Float)

PolyWorks/Inspector™ Support Contract Renewal for the renewal of annual support/maintenance contracts for each subsequent year (after the first year). (Node or Float)



SMA90008: PolyWorks/Inspector™ Airfoil Gauge Module Support Contract Renewal (Node or Float)

PolyWorks/Inspector™ Airfoil Gauge Module Support Contract Renewal for the renewal of annual support/maintenance contracts for each subsequent year (after the first year). (Node or Float)



### Polyworks Inspector Probing

#### Program



#### SOFT90017-N: PolyWorks/Inspector Probing™ (Node)

PolyWorks/Inspector Probing™ (Node) including IMInspect™ Probing, IGES and STEP. Includes 1 year mandatory support/ maintenance contract . 1 mandatory dongle (hardware key - USB port). (Optional CAD translators are available on PWIP licenses.)



#### SOFT90018-N: PolyWorks/Inspector Probing™ "One year use" license (Node)

PolyWorks/Inspector Probing™ (Node) "One year use" license including IMInspect™ Probing, IGES and STEP (Temporary "one year use" license. Can be renewed yearly. Includes 1 year support/ maintenance contract . 1 mandatory dongle (hardware key - USB port). \*\*Optional CAD translators are not available on PWIP-1 "one year use" licenses and "one year use" licenses do not qualify to software upgrades.)



#### SOFT90019-N: PolyWorks/Inspector Probing™ (Node) Facility Package

PolyWorks/Inspector Probing™ (Node) Package including IMInspect™ Probing, IGES and STEP. Includes 2 days of "hands-on" training either at InnovMetric's Quebec City office, OR at Faro Detroit office. "Hands-on" training at pre-determined dates for up to TWO trainees. Must bear their own T&L expenses and must both register to same training session and confirm directly with InnovMetric. (Optional CAD translators are available on PWIP licenses.). ONLY AVAILABLE in US, Canada and Mexico.



#### SOFT90020-N: PolyWorks/Inspector Probing™ (Node) On-site Package

PolyWorks/Inspector Probing™ (Node) On-Site Package including IMInspect™ Probing, IGES and STEP. Includes 1 year support/ maintenance contract . 1 mandatory dongle (hardware key - USB port). INCLUDES 2-day training on PolyWorks/Inspector Probing package, ON-SITE. Trainer travel expenses included. Training at customer site for up to 6 people. (Optional CAD translators are available on PWIP licenses. ) \*\*Only Available in US, Canada and Mexico\*\*

#### Program Maintenance



#### SMA90017: PolyWorks/Inspector Probing™ Support Contract Renewal (Node or Float)

PolyWorks/Inspector Probing™ Support Contract Renewal for the renewal of annual support/maintenance contracts for each subsequent year (after the first year). (Node)

### Polyworks Modeler

#### Program



#### SOFT90003-F: PolyWorks/Modeler™ + NURBS Surfacing Module (Float)

PolyWorks/Modeler™ + NURBS Surfacing Module including IMAlign™, IMMerge™, IMEdit™, NURBS Surfacing Module, IMCompress™ (Float). Includes 1 year mandatory support/ maintenance contract . 1 mandatory dongle (hardware key - USB port). Optional FREE 3-day 'basic' training (STR90002) on PolyWorks/Modeler package, at InnovMetric (Quebec City). 'Classroom type' training at pre-determined dates. Up to TWO trainees.



#### SOFT90003-N: PolyWorks/Modeler™ + NURBS Surfacing Module (Node)

PolyWorks/Modeler™ + NURBS Surfacing Module including IMAlign™, IMMerge™, IMEdit™, NURBS Surfacing Module, IMCompress™ (Node). Includes 1 year mandatory support/ maintenance contract . 1 mandatory dongle (hardware key - USB port). Optional FREE 3-day 'basic' training (STR90002) on PolyWorks/Modeler package, at InnovMetric (Quebec City). 'Classroom type' training at pre-determined dates. Up to TWO trainees.



### SOFT90004-F: PolyWorks/Modeler™ (Float)

PolyWorks/Modeler™ including IMAAlign™, IMMerge™, IMEdit™, IMCompress™ (Float) Includes 1 year mandatory support/maintenance contract . 1 mandatory dongle (hardware key - USB port). Optional FREE 3-day 'basic' training (STR90002) on PolyWorks/Modeler package, at InnovMetric (Quebec City). 'Classroom type' training at pre-determined dates. Up to TWO trainees.



### SOFT90004-N: PolyWorks/Modeler™ (Node)

PolyWorks/Modeler™ including IMAAlign™, IMMerge™, IMEdit™, IMCompress™ (Node) Includes 1 year mandatory support/maintenance contract . 1 mandatory dongle (hardware key - USB port). Optional FREE 3-day 'basic' training (STR90002) on PolyWorks/Modeler package, at InnovMetric (Quebec City). 'Classroom type' training at pre-determined dates. Up to TWO trainees.



### SOFT90005-F: PolyWorks/Advanced Manufacturing Module (Float)

Optional module for 'PolyWorks/Modeler + NURBS Surfacing Module' licenses \*Customer should already own or purchase a PWMN (SOFT90003) or PWMIN (SOFT90001) license.



### SOFT90005-N: PolyWorks/Advanced Manufacturing Module (Node)

Optional module for 'PolyWorks/Modeler + NURBS Surfacing Module' licenses \*Customer should already own or purchase a PWMN (SOFT90003) or PWMIN (SOFT90001) license.

## Program Maintenance



### SMA90003: PolyWorks/Modeler™ + NURBS Surfacing Module Support Contract Renewal (Node or Float)

PolyWorks/Modeler™ + NURBS Surfacing Module Support Contract Renewal for the renewal of annual support/maintenance contracts for each subsequent year (after the first year). (Node or Float)



### SMA90004: PolyWorks/Modeler™ Support Contract Renewal (Node or Float)

PolyWorks/Modeler™ Support Contract Renewal for the renewal of annual support/maintenance contracts for each subsequent year (after the first year). (Node or Float)



### SMA90005: PolyWorks/Advanced Manufacturing Module Support Contract Renewal (Node or Float)

PolyWorks/Advanced Manufacturing Module Support Contract Renewal for the renewal of annual support/maintenance contracts for each subsequent year (after the first year). (Node or Float)

## Polyworks Surveyor

### Program



### SOFT90028-F: PolyWorks/Surveyor™ (Float)

PolyWorks/Surveyor™ (Float) including IMAAlign™ and IMSurvey™. Includes 1 year mandatory support/ maintenance contract . 1 mandatory dongle (hardware key - USB port).



SOFT90028-N: PolyWorks/Surveyor™ (Node)

PolyWorks/Surveyor™ (Node) including IMAAlign™ and IMSurvey™. Includes 1 year mandatory support/ maintenance contract . 1 mandatory dongle (hardware key - USB port).



SOFT90029-F: PolyWorks/Surveyor & Modeler™ (Float)

PolyWorks/Surveyor & Modeler™ (Float) including IMAAlign™, IMSurvey™, IMMerge™, IMEdit™ and IMCompress™. Includes 1 year mandatory support/ maintenance contract . 1 mandatory dongle (hardware key - USB port).



SOFT90029-N: PolyWorks/Surveyor & Modeler™ (Node)

PolyWorks/Surveyor & Modeler™ (Node) including IMAAlign™, IMSurvey™, IMMerge™, IMEdit™ and IMCompress™. Includes 1 year mandatory support/ maintenance contract . 1 mandatory dongle (hardware key - USB port).



SOFT90030-F: IMTexture™ Optional Module (Float)

IMTexture™ Optional Module (Float) for color digitizers for PolyWorks/Modeler licenses. Includes 1 year mandatory support/ maintenance contract . (No dongle included)



SOFT90030-N: IMTexture™ Optional Module (Node)

IMTexture™ Optional Module (Node) for color digitizers for PolyWorks/Modeler licenses. Includes 1 year mandatory support/ maintenance contract . (No dongle included)

### Program Maintenance



SMA90028: PolyWorks/Surveyor™ Support Contract Renewal (Node or Float)

PolyWorks/Surveyor™ Support Contract Renewal for the renewal of annual support/maintenance contracts for each subsequent year (after the first year). (Node or Float)



SMA90029: PolyWorks/Surveyor & Modeler™ Support Contract Renewal (Node or Float)

PolyWorks/Surveyor & Modeler™ Support Contract Renewal for the renewal of annual support/maintenance contracts for each subsequent year (after the first year). (Node or Float)



SMA90030: IMTexture™ Optional Module Support Contract Renewal (Node or Float)

IMTexture™ Optional Module Support Contract Renewal for the renewal of annual support/maintenance contracts for each subsequent year (after the first year). (Node or Float)

### Common

#### CAD Translators



SOFT90009-F: CATIA V4 & V5 Translators (Float)

CATIA V4 & V5 Translators (Float). PolyWorks/Inspector Translators\* optional modules for PolyWorks/Inspector licenses. Includes 1 year mandatory support/ maintenance contract . \*These translators can only be used with the IMInspect module so customer should already own or purchase the IMInspect module.



### SOFT90009-N: CATIA V4 & V5 Translators (Node)

CATIA V4 & V5 Translators (Node). PolyWorks/Inspector Translators\* optional modules for PolyWorks/Inspector licenses. Includes 1 year mandatory support/ maintenance contract . \*These translators can only be used with the IMInspect module so customer should already own or purchase the IMInspect module.



### SOFT90010-F: CATIA V5 Translator (Float)

CATIA V5 Translator (Float). PolyWorks/Inspector Translators\* optional modules for PolyWorks/Inspector licenses. Includes 1 year mandatory support/ maintenance contract . \*These translators can only be used with the IMInspect module so customer should already own or purchase the IMInspect module.



### SOFT90010-N: CATIA V5 Translator (Node)

CATIA V5 Translator (Node). PolyWorks/Inspector Translators\* optional modules for PolyWorks/Inspector licenses. Includes 1 year mandatory support/ maintenance contract . \*These translators can only be used with the IMInspect module so customer should already own or purchase the IMInspect module.



### SOFT90011-F: CATIA V4 Translator (Float)

CATIA V4 Translator (Float). PolyWorks/Inspector Translators\* optional modules for PolyWorks/Inspector licenses. Includes 1 year mandatory support/ maintenance contract . \*These translators can only be used with the IMInspect module so customer should already own or purchase the IMInspect module.



### SOFT90011-N: CATIA V4 Translator (Node)

CATIA V4 Translator (Node). PolyWorks/Inspector Translators\* optional modules for PolyWorks/Inspector licenses. Includes 1 year mandatory support/ maintenance contract . \*These translators can only be used with the IMInspect module so customer should already own or purchase the IMInspect module.



### SOFT90012-F: VDA Translator (Float)

VDA Translator (Float). PolyWorks/Inspector Translators\* Optional modules for PolyWorks/Inspector licenses. Includes 1 year mandatory support/ maintenance contract . \*These translators can only be used with the IMInspect module so customer should already own or purchase the IMInspect module.



### SOFT90012-N: VDA Translator (Node)

VDA Translator (Node). PolyWorks/Inspector Translators\* Optional modules for PolyWorks/Inspector licenses. Includes 1 year mandatory support/ maintenance contract . \*These translators can only be used with the IMInspect module so customer should already own or purchase the IMInspect module.



### SOFT90013-F: Pro/E Translator (Float)

Pro/E Translator (Float). PolyWorks/Inspector Translators\* optional modules for PolyWorks/Inspector licenses \*These translators can only be used with the IMInspect module so customer should already own or purchase the IMInspect module.



### SOFT90013-N: Pro/E Translator (Node)

Pro/E Translator (Node). PolyWorks/Inspector Translators\* optional modules for PolyWorks/Inspector licenses \*These translators can only be used with the IMInspect module so customer should already own or purchase the IMInspect module.



### SOFT90014-F: UG Translator (Float)

UG Translator (Float). PolyWorks/Inspector Translators\* optional modules for PolyWorks/Inspector licenses. Includes 1 year mandatory support/ maintenance contract . \*These translators can only be used with the IMInspect module so customer should already own or purchase the IMInspect module.



### SOFT90014-N: UG Translator (Node)

UG Translator (Node). PolyWorks/Inspector Translators\* optional modules for PolyWorks/Inspector licenses. Includes 1 year mandatory support/ maintenance contract . \*These translators can only be used with the IMInspect module so customer should already own or purchase the IMInspect module.



### SOFT90015-F: Inventor Translator (Float)

Inventor Translator (Float). PolyWorks/Inspector Translators\* optional modules for PolyWorks/Inspector licenses \*These translators can only be used with the IMInspect module so customer should already own or purchase the IMInspect module.



### SOFT90015-N: Inventor Translator (Node)

Inventor Translator (Node). PolyWorks/Inspector Translators\* optional modules for PolyWorks/Inspector licenses \*These translators can only be used with the IMInspect module so customer should already own or purchase the IMInspect module.



### SOFT90016-F: SolidWorks Translator (Float)

SolidWorks Translator (Float). PolyWorks/Inspector Translators\* optional modules for PolyWorks/Inspector licenses. Includes 1 year mandatory support/ maintenance contract . \*These translators can only be used with the IMInspect module so customer should already own or purchase the IMInspect module.



### SOFT90016-N: SolidWorks Translator (Node)

SolidWorks Translator (Node). PolyWorks/Inspector Translators\* optional modules for PolyWorks/Inspector licenses. Includes 1 year mandatory support/ maintenance contract . \*These translators can only be used with the IMInspect module so customer should already own or purchase the IMInspect module.

## CAD Translator Maintenance



### SMA90009: CATIA V4 & V5 Translators Support Contract Renewal (Node or Float)

CATIA V4 & V5 Translators Support Contract Renewal for the renewal of annual support/maintenance contracts for each subsequent year (after the first year). (Node or Float)



### SMA90010: CATIA V5 Translator Support Contract Renewal (Node or Float)

CATIA V5 Translator Support Contract Renewal for the renewal of annual support/maintenance contracts for each subsequent year (after the first year). (Node or Float)



### SMA90011: CATIA V4 Translator Support Contract Renewal (Node or Float)

CATIA V4 Translator Support Contract Renewal for the renewal of annual support/maintenance contracts for each subsequent year (after the first year). (Node or Float)



SMA90012: VDA Translator Support Contract Renewal (Node or Float)

VDA Translator Support Contract Renewal for the renewal of annual support/maintenance contracts for each subsequent year (after the first year). (Node or Float)



SMA90013: Pro/E Translator Support Contract Renewal (Node or Float)

Pro/E Translator Support Contract Renewal for the renewal of annual support/maintenance contracts for each subsequent year (after the first year). (Node or Float)



SMA90014: UG Translator Support Contract Renewal (Node or Float)

UG Translator Support Contract Renewal for the renewal of annual support/maintenance contracts for each subsequent year (after the first year). (Node or Float)



SMA90015: Inventor Translator Support Contract Renewal (Node or Float)

Inventor Translator Support Contract Renewal for the renewal of annual support/maintenance contracts for each subsequent year (after the first year). (Node or Float)



SMA90016: SolidWorks Translator Support Contract Renewal (Node or Float)

SolidWorks Translator Support Contract Renewal for the renewal of annual support/maintenance contracts for each subsequent year (after the first year). (Node or Float)

## Software Other

### Program



SOFT90021-N: Upgrade from PW/Inspector Probing™ to PW/Inspector™ (Node) Facility - Within 1st year

Upgrade from PolyWorks/Inspector Probing™ to PolyWorks/Inspector™ (Node) - WITHIN first year of PWIP purchase including IMInspect™, IGES and STEP. Includes 1 year support/ maintenance contract . 1 mandatory dongle (hardware key - USB port). INCLUDES 3-day 'basic' training on PolyWorks/Inspector package, at InnovMetric (Quebec City). 'Classroom type' training at pre-determined dates. Up to TWO trainees may register for each license ordered. Trainees must bear their own T&L expenses. Must both register to the same Classroom training and confirm directly with InnovMetric. Must be scheduled within one year from license purchase. After one year, regular fees to apply. \*\*Only Available in US, Canada and Mexico\*\*



SOFT90022-N: Upgrade from PW/Inspector Probing™ to PW/Inspector™ (Node) - Post 1st Yr PWIP purchase

Upgrade from PolyWorks/Inspector Probing™ to PolyWorks/Inspector™ - AFTER first year of PWIP purchase including IMInspect™, IGES and STEP (Node). Includes 1 year support/ maintenance contract . 1 mandatory dongle (hardware key - USB port). INCLUDES 3-day 'basic' training on PolyWorks/Inspector package, at InnovMetric (Quebec City). 'Classroom type' training at pre-determined dates. Up to TWO trainees may register for each license ordered. Trainees must bear their own T&L expenses. Must both register to the same Classroom training and confirm directly with InnovMetric. Must be scheduled within one year from license purchase. After one year, regular fees to apply. \*\*Only Available in US, Canada and Mexico\*\*



SOFT90023-N: Upgrade from PWI Probing to PWI + IMAAlign™ (Node) - Within 1st Yr of PWIP purchase.

Upgrade from PolyWorks/Inspector Probing™ to PolyWorks/Inspector™ + Meshing - Within first year of PWIP purchase Includes IMInspect™, IMAAlign™, IMMerge™, IGES and STEP. Includes 1 year support/ maintenance contract. 1 mandatory dongle (hardware key - USB port). INCLUDES 3-day 'basic' training on PolyWorks/Inspector package, at InnovMetric (Quebec City). 'Classroom type' training at pre-determined dates. Up to TWO trainees may register for each license ordered. Trainees must bear their own T&L expenses. Must both register to the same Classroom training and confirm directly with InnovMetric. Must be scheduled within one year from license purchase. After one year, regular fees to apply. \*\*Only Available in US, Canada and Mexico\*\*



SOFT90024-N: Upgrade from PWI Probing to PWI with IMAAlign (Node) - After 1st Yr of PWIP purchase

Upgrade from PolyWorks/Inspector Probing™ to PolyWorks/Inspector™ + Meshing - After first year of PWIP purchase. Includes IMInspect™, IMAAlign™, IMMerge™, IGES and STEP. Includes 1 year support/ maintenance contract . 1 mandatory dongle (hardware key - USB port). INCLUDES 3-day 'basic' training on PolyWorks/Inspector package, at InnovMetric (Quebec City). 'Classroom type' training at pre-determined dates. Up to TWO trainees may register for each license ordered. Trainees must bear their own T&L expenses. Must both register to the same Classroom training and confirm directly with InnovMetric. Must be scheduled within one year from license purchase. After one year, regular fees to apply. \*\*Only Available in US, Canada and Mexico\*\*



SOFT90025: Polyworks Additional Dongle (USB)

Polyworks Additional Dongle (USB)



SOFT90026-N: Upgrade from PWI Probing to PWM & PWI + NURBS (Node) - Within 1st Yr of PWIP purchase

Upgrade from PolyWorks/Inspector Probing™ to PolyWorks/Modeler & Inspector™ + NURBS Surfacing Module (Node) - WITHIN first year of PWIP purchase including IMAAlign™, IMMerge™, IMEdit™, NURBS Surfacing Module, IMCompress™, IMInspect™, IGES and STEP. INCLUDES 5-day 'basic' training on PolyWorks/Modeler&Inspector package, at InnovMetric (Quebec City). 'Classroom type' training at pre-determined dates. Up to TWO trainees may register for each license ordered. Trainees must bear their own T&L expenses. Must both register to the same Classroom training and confirm directly with InnovMetric. Must be scheduled within one year from license purchase. After one year, regular fees to apply.



SOFT90027-N: Upgrade from PWI Probing™ to PWM + PWI + NURBS (Node) - After 1st Yr of PWIP purchase

Upgrade from PolyWorks/Inspector Probing™ to PolyWorks/Modeler & Inspector™ + NURBS Surfacing Module (Node) - After first year of PWIP purchase including IMAAlign™, IMMerge™, IMEdit™, NURBS Surfacing Module, IMCompress™, IMInspect™, IGES and STEP. INCLUDES 5-day 'basic' training on PolyWorks/Modeler&Inspector package, at InnovMetric (Quebec City). 'Classroom type' training at pre-determined dates. Up to TWO trainees may register for each license ordered. Trainees must bear their own T&L expenses. Must both register to the same Classroom training and confirm directly with InnovMetric. Must be scheduled within one year from license purchase. After one year, regular fees to apply.

## Pointools



SOFTS0325: Pointools - View Pro

Pointools View Pro(TM) is the point cloud collaboration software for viewing and reviewing the largest point cloud models from every 3D laser scanner. Powered by Pointools Vortex™ – the industry's leading point cloud visualization engine, Pointools View Pro can open 2D and 3D models and manipulate billions of points with ease. Add in versatile tools for annotation, generating images, and producing animation, and Pointools View Pro makes it easy to collaborate with all stakeholders.



### SOFTS0325-UNI: Pointools - View Pro - Educational

Pointools View Pro(TM) is the point cloud collaboration software for viewing and reviewing the largest point cloud models from every 3D laser scanner.

Powered by Pointools Vortex™ – the industry's leading point cloud visualization engine, Pointools View Pro can open 2D and 3D models and manipulate billions of points with ease. Add in versatile tools for annotation, generating images, and producing animation, and Pointools View Pro makes it easy to collaborate with all stakeholders. For non-commercial academic use only.



### SOFTS0325-UNI10: Pointools - View Pro - Educational 10 Pack

Pointools View Pro™ is the point cloud collaboration software for viewing and reviewing the largest point cloud models from every 3D laser scanner. Powered by Pointools Vortex™ – the industry's leading point cloud visualization engine, Pointools View Pro can open 2D and 3D models and manipulate billions of points with ease. Add in versatile tools for annotation, generating images, and producing animation, and Pointools View Pro makes it easy to collaborate with all stakeholders. Pack of 10 single-user licenses. For non-commercial academic use only.



### SOFTS0327: Pointools - Plug-in for Rhino

Pointools 4 Rhino™ delivers Pointool's industry leading point cloud display technology into Rhinoceros®. This enables you to use Rhino's powerful drawing and modelling toolset within a point cloud context, ideal for: Visualising your Rhino model in a point cloud context, Modelling from point clouds and Lidar data, 2d drawing from point clouds and Lidar data



### SOFTS0327-UNI: Pointools - Plug-in for Rhino - Educational

Pointools 4 Rhino™ delivers Pointool's industry leading point cloud display technology into Rhinoceros®. This enables you to use Rhino's powerful drawing and modelling toolset within a point cloud context, ideal for: Visualising your Rhino model in a point cloud context, Modelling from point clouds and Lidar data, 2d drawing from point clouds and Lidar data. For non-commercial academic use only.



### SOFTS0327-UNI10: Pointools - Plug-in for Rhino - Edu. - 10 Pack

Pointools 4 Rhino™ delivers Pointool's industry leading point cloud display technology into Rhinoceros®. This enables you to use Rhino's powerful drawing and modelling toolset within a point cloud context, ideal for: Visualising your Rhino model in a point cloud context, Modelling from point clouds and Lidar data, 2d drawing from point clouds and Lidar data. Pack of 10 single-user licenses.

For non-commercial academic use only.



### SOFTS0350: Pointools Plug-in for AutoCAD

Pointools for AutoCAD delivers the power and flexibility to work quickly with large point cloud datasets within AutoCAD, the ideal solution for drawing and modeling from scan data.



### SOFTS0350-UNI: Pointools Plug-in for AutoCAD Educational

Pointools for AutoCAD delivers the power and flexibility to work quickly with large point cloud datasets within AutoCAD, the ideal solution for drawing and modeling from scan data.

For non-commercial academic use only.



### SOFTS0350-UNI10: Pointools Plug-in for AutoCAD Educational 10 Pack

Pointools for AutoCAD delivers the power and flexibility to work quickly with large point cloud datasets within AutoCAD, the ideal solution for drawing and modeling from scan data. Pack of 10 single-user licenses. For non-commercial academic use only.



### SOFTS0351: Pointools - Edit

Pointools Edit builds on all the features of ViewPro with point cloud layer based editing and segmentation. Additionally it offers tools for RGB editing and cleaning of noise and obstructions.



### SOFTS0351-UNI: Pointools - Edit - Educational

Pointools Edit builds on all the features of ViewPro with point cloud layer based editing and segmentation. Additionally it offers tools for RGB editing and cleaning of noise and instructions. For non-commercial academic use only.



### SOFTS0351-UNI10: Pointools - Edit - Educational 10 Pack

Pointools Edit builds on all the features of ViewPro with point cloud layer based editing and segmentation. Additionally it offers tools for RGB editing and cleaning of noise and obstructions. Pack of 10 single-user licenses. For non-commercial academic use only.



### SOFTS0352: Pointools - Upgrade View Pro to Edit

Upgrade from Pointools View Pro to Pointools Edit.



### SOFTS0352-UNI: Pointools Upgrade View Pro to Edit - Educational

Upgrade from Pointools View Pro to Pointools Edit.  
For non-commercial academic use only.



### SOFTS0352-UNI10: Pointools - Upgrade View Pro to Edit - Educational 10 Pack

Upgrade from Pointools View Pro to Pointools Edit. Pack of 10 single-user license upgrades. For non-commercial academic use only.



### SOFTS0359: Pointools Plug-In for SketchUp

The Pointools™ Plug-in for SketchUp® delivers the power and flexibility to reuse the largest point cloud models inside Google SketchUp. Streamline scan-to-model workflows & import all major scan data formats. Eliminate time-wasting translation by reusing the Pointools POD model format. Maintain visual quality and model accuracy & display billions of points on screen without extreme decimation. Increase model productivity by creating 2D/3D geometry from a selection of points.



### SOFTS0359-UNI: Pointools Plug-In for SketchUp Educational

The Pointools™ Plug-in for SketchUp® delivers the power and flexibility to reuse the largest point cloud models inside Google SketchUp. Streamline scan-to-model workflows & import all major scan data formats. Eliminate time-wasting translation by reusing the Pointools POD model format. Maintain visual quality and model accuracy & display billions of points on screen without extreme decimation. Increase model productivity by creating 2D/3D geometry from a selection of points. For non-commercial academic use only.



### SOFTS0359-UNI10: Pointools Plug-In for SketchUp - Educational 10 Pack

The Pointools(TM) Plug-in for SketchUp® delivers the power and flexibility to reuse the largest point cloud models inside Google SketchUp. Streamline scan-to-model workflows & import all major scan data formats. Eliminate time-wasting translation by reusing the Pointools POD model format. Maintain visual quality and model accuracy & display billions of points on screen without extreme decimation. Increase model productivity by creating 2D/3D geometry from a selection of points. Pack of 10 single-user licenses. For non-commercial academic use only.



### SOFTS0360: Pointools License Server

Pointools License Server enables all of your Pointools licenses to reside on a central server for use by any computer attached to the network.



### SOFTS0360-UNI: Pointools License Server Educational

Pointools License Server enables all of your Pointools licenses to reside on a central server for use by any computer attached to the network. For non-commercial academic use only.



### SOFTS0361: Pointools USB Dongle

Pointools USB Dongle enables all of your Pointools licenses to be used as hard-lock licenses on any computer to which the USB dongle is plugged into.



### SOFTS0361-UNI: Pointools USB Dongle Educational

Pointools USB Dongle enables all of your Pointools licenses to be used as hard-lock licenses on any computer to which the USB dongle is plugged into. For non-commercial academic use only.



### SOFTS0362: Pointools Suite

Pointools Suite includes the following apps and plug-ins:

- Pointools Edit
- Pointools POD Creator
- Pointools Plug-in for AutoCAD
- Pointools Plug-in for Rhino
- Pointools Plug-in for SketchUp



### SOFTS0362-UNI: Pointools Suite Educational

Pointools Suite includes the following apps and plug-ins:

- Pointools Edit
- Pointools POD Creator
- Pointools Plug-in for AutoCAD
- Pointools Plug-in for Rhino
- Pointools Plug-in for SketchUp

For non-commercial academic use only.



SOFTS0362-UNI10: Pointools Suite Educational 10 Pack

Pointools Suite includes the following apps and plug-ins:

- Pointools Edit
- Pointools POD Creator
- Pointools Plug-in for AutoCAD
- Pointools Plug-in for Rhino
- Pointools Plug-in for SketchUp

Pack of 10 single-user licenses.

For non-commercial academic use only.



SOFTS0363: Pointools Upgrade View Pro to Suite

Upgrade from Pointools View Pro to Pointools Suite.



SOFTS0363-UNI: Pointools Upgrade View Pro to Suite Educational

Pointools Upgrade View Pro to Suite Educational. For non-commercial academic use only.



SOFTS0363-UNI10: Pointools Upggrade View Pro to Suite Educational - 10 Pck

Upgrade from Pointools View Pro to Pointools Suite. Pack of 10 single-user licenses. For non-commercial academic use only.



SOFTS0364: Pointools Upgrade Edit to Suite

Upgrade from Pointools Edit to Pointools Suite.



SOFTS0364-UNI: Pointools Upgrade Edit to Suite - Educational

Upgrade from Pointools Edit to Pointools Suite.

For non-commercial academic use only.



SOFTS0364-UNI10: Pointools Upgrade Edit to Suite Educational - 10 Pack

Upgrade from Pointools Edit to Pointools Suite. Pack of 10 single-user licenses. For non-commercial academic use only.

## Quantapoint

### Prism 3D

#### Program



14634: PRISM 3D (Annual Standalone License)

An annual standalone (individual computer) license for software to access the Digital Facility™ directly to view and extract dimensional and other information.



14635: PRISM 3D (Annual Network License)

An annual network (simultaneous user) license for software to access the Digital Facility™ directly to view and extract dimensional and other information.



### CAD Translator

#### 14636: CAD Conversion Option for PRISM 3D (Perpetual License)



An individual computer perpetual license for software that enables 3D CAD models in DWG or VRML 1.0 format to be imported into PRISM 3D to view with and clash against Laser Models.

### QuantaCAD

#### Program

#### 14637: QuantaCAD (Annual Standalone License)



An annual standalone (individual computer) license for software to access the Digital Facility™ in all supported design and reviews software, including specific versions of PDMS, PDS, SmartPlant, AutoPlant, Microstation, AutoCAD, Plant 3D, Revit, and CADWorx.

#### 14638: QuantaCAD Complete (Annual Network License)



An annual standalone (individual computer) license for software to access the Digital Facility™ in all supported design and reviews software, including specific versions of PDMS, PDS, SmartPlant, AutoPlant, Microstation, AutoCAD, Plant 3D, Revit, and CADWorx.

#### 14639: QuantaCAD (Annual Standalone License) Test Drive



A 4 month standalone (individual computer) license for software to access the Digital Facility™ in all supported design and reviews software, including specific versions of PDMS, PDS, SmartPlant, AutoPlant, Microstation, AutoCAD, Plant 3D, Revit, and CADWorx.

#### 14832: QuantaCAD for Plant 3D (Annual Standalone License)



An annual network (simultaneous user) license for software to access the Digital Facility™ in all supported design and reviews software, including specific versions of Autodesk Plant 3D and AutoCAD.

#### 14833: QuantaCAD for Plant 3D (Annual Network License)



An annual network (simultaneous user) license for software to access the Digital Facility™ in all supported design and reviews software, including specific versions of Autodesk Plant 3D and AutoCAD.

#### 14834: QuantaCAD for Architectural (Annual Standalone License)



An annual network (simultaneous user) license for software to access the Digital Facility™ in all supported design and reviews software, including specific versions of Autodesk Revit and AutoCAD.

#### 14835: QuantaCAD for Architectural (Annual Standalone License)



An annual network (simultaneous user) license for software to access the Digital Facility™ in all supported design and reviews software, including specific versions of Autodesk Revit and AutoCAD.



### 14836: Quantapoint Data Conversion Utility (Annual Standalone License)



An annual standalone (individual computer) license for software to convert laser data from Faro and open formats (PTX, etc.) into a Digital Facility™. Using Quantapoint products, the Digital Facility can be accessed directly or within various 3D engineering design software from AutoDesk, AVEVA, Intergraph and Bentley.

\*The Quantapoint Data Conversion Utility will be offered for one (1) year at no charge to customers that lease or purchase a Faro Photon or Faro Focus.

## Rapidform

### XOR

#### CAD Translator

##### CAD Translator Maintenance

#### SMA60007: Floating License Maintenance



Floating License annual Maintenance, Floating license Maintenance is required for any customer using a floating license on any Rapidform product. Only one floating license maintenance required per customer, regardless of # of seats.

#### Program

#### SOFT60002: Rapidform XOR



Perpetual license of Rapidform XOR. Software for creating parametric CAD models and mesh models from 3D scan data. Includes liveTransfer translators for SolidWorks 2007+, UGS NX 4 & 5, and Pro/E Wildfire 3.0 & 4.0. Includes one year of software maintenance.

#### Program Maintenance

#### SMA60002: Rapidform XOR Maintenance



Rapidform XOR annual Maintenance

### XOS

#### Program

#### SOFT60001: Rapidform XOS



Perpetual license of Rapidform XOS. Includes one year of software maintenance.

#### Program Maintenance

#### SMA60001: Rapidform XOS Maintenance



Rapidform XOS annual Maintenance

### XOV

#### CAD Translators

#### SOFT60007: Rapidform XOVI PMI Catia V5



Rapidform PMI Importer for CATIA V5 - Imports .CATPart files from CATIA V5 R6 through R18, including GD&T (aka FT&A). PMI information includes notes, dimensions, geometric tolerances, datum reference frames, datum references, datum & datum targets.



SOFT60008: Rapidform XOV PMI Siemens NX



Rapidform PMI Importer for Siemens NX - Imports .prt files from NX2 - NX5, including GD&T, PMI information includes notes, dimensions, geometric tolerances, datum reference frames, datum references, datum & datum targets.

SOFT60009: Rapidform XOV PMI Pro/E



Rapidform PMI Importer for Pro/E Wildfire - Imports .prt and .prt.\* files from Pro/E 16 to Wildfire 4, including GD&T, PMI information includes notes, dimensions, geometric tolerances, datum reference frames, datum references, datum & datum targets.

SOFT60010: Rapidform XOV Exch Solidworks



Rapidform Exchange importer for SolidWorks - Imports .sldprt files from SolidWorks 98 - 2008

SOFT60011: Rapidform XOV Exch Catia V4



Rapidform Exchange importer for CATIA V4 - Imports .model files from CATIA 4.1.9 to CATIA 4.2.4

### CAD Translator

#### CAD Translator Maintenance

SMA60008: XOV Translator Annual Maintenance



Rapidform Importer annual Maintenance (per importer)

### Program

SOFT60003: Rapidform XOV



Perpetual license of Rapidform XOV point cloud inspection software. Compare 3D scan data to CAD models or other scanned parts, and perform geometric dimensioning and tolerancing (GD&T) on scanned parts. Includes one year of software maintenance.

SOFT60004: Rapidform XOV Add-on



Rapidform XOV Add-on, 1 license add-on to XOR or XOS.  
Add-on licenses may only be purchased at the same time as the other licenses are purchased.

### Program Maintenance

SMA60003: Rapidform XOV Maintenance



Rapidform XOV annual Maintenance

SMA60004: Rapidform XOV Add-on Maintenance



Rapidform XOV Add-on to XOR/XOS annual Maintenance



## SBG Geo

### ATS Real Reality Tunnel

#### Program



#### 10664-001: FARO Tunnel & Mining Package including Real Reality Tunnel Software

FARO Tunnel & Mining Package includes the ATS Real Reality Tunnel Software – powered by SBG Geo - giving users a powerful tool to control tunnels of all shapes with unlimited opportunities. Deviations can be visualized in 3-D, in cross sections and in contour lines. Volume calculation of a theoretical tunnel can use an optional offset and can be limited laterally and vertically. The resulting volume report and the drawing functions create a detailed report and enable full control of the tunnel. For a quick check of crucial parts, users can directly display a measured tunnel and compare it with a theoretical tunnel by displaying sections, offsets, and distances to the theoretical tunnel.



#### 10664-002: FARO Tunnel & Mining Package(+) including Real Reality Tunnel Software

FARO Tunnel & Mining Package(+) includes the ATS Real Reality Tunnel Software – powered by SBG Geo - giving users a powerful tool to control tunnels of all shapes with unlimited opportunities. Deviations can be visualized in 3-D, in cross sections and in contour lines. Volume calculation of a theoretical tunnel can use an optional offset and can be limited laterally and vertically. The resulting volume report and the drawing functions create a detailed report and enable full control of the tunnel. For a quick check of crucial parts, users can directly display a measured tunnel and compare it with a theoretical tunnel by displaying sections, offsets, and distances to the theoretical tunnel. Includes 1 seat of FARO Scene (SOFTS0302) software.

## Other



#### AMA00001: PointCab maintenance

PointCab maintenance.

1 year maintenance contract for online and phone support for all not warranty and liability issues.



#### AMA00002: PointCab maintenance Uni

PointCab maintenance for educational users

1 year maintenance contract for online and phone support for all not warranty and liability issues.



#### APPS00001: PointCab Layout

PointCab Layout, single user license.

Creates layouts, floor plans and sectional views for almost all CAD systems.



#### APPS00002: PointCab Viewer

PointCab Viewer, single user license.

Viewer for the layout with measurement of length and surface directly within PointCab.



#### APPS00003: PointCab PDF

PointCab PDF, single user license.

Automatic PDF creation from layouts with thumbnails of scans.



### APPS00004: PointCab Layout Uni

PointCab Layout, single user license for educational use.  
Creates layouts, floor plans and sectional views for almost all CAD systems.



### APPS00005: PointCab Viewer Uni

PointCab Viewer, single user license for educational use.  
Viewer for the layout with measurement of length and surface directly within PointCab.



### APPS00006: PointCab PDF Uni

PointCab PDF, single user license for educational use.  
Automatic PDF creation from layouts with thumbnails of scans.



## Training

### FARO



NO PICTURE AVAILABLE

#### TR-LS-SCN-A: Laser Scanner Training - 3d - FARO. add.

3-Day course for one (1) Trainee at a FARO training facility - Course topics include: scanner setup and operations; scan project planning and execution; scanner project sharing on the internet using FARO Scene Webshare; introduction to 3rd party software, exporting data to third party, workflows, example deliverables. NOTE: Training is limited to 12 participants and scheduled on a first come first served basis. Classes may be cancelled within two weeks of scheduled date if minimum enrollment (5 participants) is not met. Training must be taken within 90 days of training purchase. Note: This is for seats of FARO Facility training purchased by a company in ADDITION to the initial seat (TR-LS-SCN-F). Additional seats of training must be in the same offering as the initial seat.

### FARO Cloud

#### Training Facility



#### TR-LS-FCA-W: FARO Cloud 8 hrs web training

Web-based Training 1 day / 8 hours, can be split into multiple sessions on different days

#### Customer Site



#### TR-LS-FCA-US: FARO Cloud 2 day Customer site training US

FARO Cloud 2 day customer site training including travel costs  
Location: continental United States

### FARO Scene - Record - Scout

#### Training Facility



NO PICTURE AVAILABLE

#### TR-LS-SCN-F: Laser Scanner Basic Training - 3-Day - Facility

Laser Scanner Basic Training - Facility. 3-Day course for One (1) Trainee at an approved FARO training facility that discusses LS operation, setup, and basic measurements. NOTE: Classroom Trainings are limited to Six (6) trainees and are scheduled on a first come first served basis. Classes can be canceled within two weeks of the scheduled date if sufficient enrollment is not met. Training must be taken within 90 days of purchase. FIRST PERSON



NO PICTURE AVAILABLE

#### TR-LS-SCN-F2P: Laser Scanner Basic Training - 3-Day - Facility 2ND PERSON

Laser Scanner Basic Training - Facility. 3-Day course for the second trainee at an approved FARO training facility that discusses LS operation, setup, and basic measurements. NOTE: Classroom Trainings are limited to Six (6) trainees and are scheduled on a first come first served basis. Classes can be canceled within two weeks of the scheduled date if sufficient enrollment is not met. Training must be taken within 90 days of purchase. SECOND PERSON



### Customer Site



#### TR-LS-APPSPEC-O1: LS Application Specific Training, 1-Day Customer site

1-Day customer site Laser Scanner application specific training customized for customer application. Shipping and travel expenses are included in most countries. Up to SIX (6) trainees. Equipment rental not included. Price per class. Training must be taken within 90 days of purchase.



#### TR-LS-APPSPEC-O1-TTD: FARO LS Technology Test Drive Training

Two day customer site setup and training for FARO Laser Scanner Technology Test Drive program equipment. Does not apply to 3rd party vendor software



#### TR-LS-APPSPEC-OADAY: LS Application Specific Training, Additional Day, Customer site

Laser Scanner Application Specific Training -Additional Day. Customer site Laser Scanner application specific training customized for customer application. Training to be conducted at customer site. Shipping and travel expenses are included in most countries. Up to Six (6) trainees. Equipment rental not included. Price per class. Training must be taken within 90 days of purchase. NOTE: This additional day must be taken in conjunction with TR-LS-APPSPEC-O1.

### Customer Site



NO PICTURE AVAILABLE

#### TR-LS-AS-SCN-OA: LS App Specific 1 Additional dy Train, cust site

1 extra day hands-on FARO Laser Scanner training session to help solve customer specific applications. This additional day must be taken in conjunction with TR-LS-AS-SCN-O. Training for up to six (6) participants will be conducted at the customer site. Training must be taken within 90 days of training purchase. This does not include travel expenses for the trainer.

### FARO Laser Scanner

#### Customer Site



NO PICTURE AVAILABLE

#### TR-LS-AS-SCN-O: Laser Scanner 1 day Training, Customer Site

1 day course hands-on FARO Laser Scanner training session to help solve customer specific applications. Provides training for up to six (6) participants at customer site. Training must be taken within 90 days of training purchase. Includes travel expenses for the trainer



NO PICTURE AVAILABLE

#### TR-LS-SCN-O: Laser Scanner Basic 3 day Training, customer site

Laser Scanner Basic Training 3-Day Customer site training course that discusses the principles of LS operation, setup, and basic measurements. Shipping and travel expenses are included in most countries. Up to Four (4) trainees. Customer Site Trainings are designed for up to Four (4) trainees to ensure proper transfer of knowledge and understanding. Price per class. Training must be taken within 90 days of purchase.

## Geomagic

### Studio

#### Training Facility



#### STR80003: Geomagic Studio Training (3 days) Geomagic Facility - North Carolina, USA

Three-day instructor-led course designed to teach users the most effective and efficient way to achieve results with Geomagic Studio.



STR80004: Geomagic Studio and Qualify - Training (5 days) Geomagic Facility - North Carolina, USA

Five-day instructor-led course designed to teach users the most effective and efficient way to achieve results with Geomagic Studio and Geomagic Qualify.

**Customer Site**



STR80010: Geomagic Studio Training On-Site (3 days) - North America

Travel Expenses will be invoiced separately, not to exceed \$2500. Three-day instructor-led course designed to teach users the most effective and efficient way to achieve results with Geomagic Studio



STR80011: Geomagic Studio with Qualify Training On-Site (5 days)- North America

Travel Expenses will be invoiced separately, not to exceed \$2500. Five-day instructor-led course designed to teach users the most effective and efficient way to leverage Geomagic Studio and Geomagic Qualify

## Qualify

**Training Facility**



STR80002: Geomagic Training Qualify 3 days North Carolina, USA

Three-day instructor-led course designed to teach users the most effective and efficient way to achieve results with Geomagic Qualify.



STR80002-QP: GeoMagic Training Qualify Probe 2-day North Carolina, USA

2-day instructor-led course designed to teach users the most effective and efficient way to achieve results with Geomagic Qualify Probe.

**Customer Site**



STR80009: Geomagic Training Qualify, On-Site 3 days, North America

Travel Expenses will be invoiced separately, not to exceed \$2500. Three-day instructor-led course designed to teach users the most effective and efficient way to achieve results with Geomagic Qualify.



STR80009-QP: GeoMagic Training Qualify Probe 2-day on-Site, USA

2-day instructor-led course designed to teach users the most effective and efficient way to achieve results with Geomagic Qualify Probe.

## Wrap



STR80001: Geomagic Training Wrap 2 days, North Carolina, USA

Training - Geomagic Wrap - Two days instructor-led course. Travel and lodging expense paid by student. Priced per person.



STR80008: Geomagic Training Wrap, Onsite 2 days, North America

Training - Geomagic Wrap - Instructor-led two day class. Five (5) students maximum, plus travel. Actual travel expenses invoiced separately for on-site training.



### Application Specific



#### STR80019: Training Consulting/Mentoring 1 day - Onsite

Custom Additional Day Onsite Training North America. Must be added to existing class. 8 students maximum, plus travel not to exceed \$2,500.00 per day.

## Gexcel

### JRC 3D Reconstructor

#### Customer Site



#### STR70001: Train Recon. Heritage. ROW

Training at customer site for JRC 3D Reconstructo Heritage.  
3 days.  
Incl. travel costs and expenses for countries outside of Europe.



#### STR70002: Train Recon. Heritage. ROW Training Recon. Constr.. ROW

Training at customer site for JRC 3D Reconstructo Construction.  
2 days.  
Incl. travel costs and expenses for countries outside of Europe.



#### STR70003: Training Recon. Arm. ROW

Training at customer site for JRC 3D Reconstructo Arm.  
1 day.  
Incl. travel costs and expenses or countries outside of Europe.



#### STR70004: Training Recon. Full. ROW

Training at customer site for JRC 3D Reconstructo Heritage.  
3 days.  
Incl. travel costs and expenses or countries outside of Europe.

## InnovMetric

### Polyworks

#### Training Facility



#### STR90001: PolyWorks/ Modeler&Inspector pkg - 5 day FACILITY training

5-day 'basic' training on PolyWorks/Modeler&Inspector package (T5QB), at InnovMetric (Quebec City). 'Classroom type' training at pre-determined dates. Up to TWO trainees may register for each license ordered. Trainees must bear their own T&L expenses. Must both register to the same Classroom training and confirm directly with InnovMetric. Must be scheduled within one year from license purchase. After one year, regular fees to apply.



#### STR90001-ADD: PolyWorks/ Modeler&Inspector pkg - 5 day FACILITY training- 1 Additional Trainee

One (1) additional trainee for 5-day 'basic' training (STR90001) on PolyWorks/Modeler & Inspector™, at InnovMetric (Quebec City). Limit Six (6) total trainees for class and all must attend same class. Trainee must bear their own T&L expenses.



### STR90002: Polyworks Modeler OR Inspector 3 dy Training

3-day basic training on PolyWorks/Modeler OR on PolyWorks/Inspector package, at InnovMetric (Quebec City). Classroom type training at pre-determined dates. Up to TWO trainees may register for each license ordered. Trainees must bear their own T&L expenses. Must both register to the same Classroom training and confirm directly with InnovMetric. Must be scheduled within one year from license purchase. After one year, regular fees to apply.



### STR90002-ADD: PolyWorks/ Modeler or Inspector pkg - 3 day FACILITY training- 1 Additional Trainee

1 additional trainee for 3day 'basic' training on PolyWorks/Modeler OR on PolyWorks/Inspector package, at InnovMetric (Quebec City). Limit 6 total trainees for class and all must attend same class. Trainee must bear their own T&L expenses.



### STR90006: PolyWorks/Modeler OR on PolyWorks/Inspector package - 3-day 'Advanced' FACILITY training

3-day 'advanced' training on PolyWorks/Modeler OR on PolyWorks/Inspector package, at InnovMetric (Quebec City). Trainees must bear their own T&L expenses. For up to 6 people. Client must have attended a PolyWorks 'basic' training prior to ordering an 'advanced' training.



### STR90010: PolyWorks/Inspector Probing package - 2-day FACILITY training

2-day training on PolyWorks/Inspector Probing package, at InnovMetric (Quebec City). 'Hands-on' training at pre-determined dates. Up to two trainees may register. Trainees must bear their own T&L expenses. Must both register to the same training and confirm directly with InnovMetric. Note : No more than four attendants (from two different organizations) in total for any such training.



### STR90021: PolyWorks 2 day Training at Novi, MI

2-day basic training on PolyWorks/Inspector Probing package, at PolyWorks USA's office (Novi, MI). 'Classroom type' training at pre-determined dates. Prices shown are PER trainee. Trainee(s) must bear their own T&L expenses and must confirm directly with InnovMetric. Training must be scheduled within one year from license purchase.



### STR90022: PolyWorks 3 day Training at Novi, MI

3-day basic training on PolyWorks/Modeler OR PolyWorks/Inspector package, at PolyWorks USA's office (Novi, MI). 'Classroom type' training at pre-determined dates. Prices shown are PER trainee. Trainee(s) must bear their own T&L expenses and must confirm directly with InnovMetric. Training must be scheduled within one year from license purchase.



### STR90023: PolyWorks 5 day Training at Novi, MI

5-day basic training on PolyWorks/Modeler&Inspector package, at PolyWorks USA's office (Novi, MI). 'Classroom type' training at pre-determined dates. Prices shown are PER trainee. Trainee(s) must bear their own T&L expenses and must confirm directly with InnovMetric. Training must be scheduled within one year from license purchase.

## Customer Site



### STR90003: PolyWorks/Modeler package - 3-day 'basic' ON-SITE training

3-day 'basic' training on PolyWorks/Modeler package, on-site. Trainer travel expenses included. Training at customer site for up to 6 people. (USA, Canada, Mexico)



[STR90003-SA: PolyWorks/Modeler package 3 day 'basic' Customer Site training](#)

Trainer travel expenses included. Training at customer site for up to 6 people. (South America)



[STR90004: PolyWorks/Inspector package - 3-day 'basic' ON-SITE training](#)

3-day 'basic' training on PolyWorks/Inspector package, on-site. Trainer travel expenses included. Training at customer site for up to 6 people. (USA, Canada, Mexico)



[STR90004-SA: PolyWorks/Inspector package 3 dy 'basic' Customer Site Training](#)

Trainer travel expenses included. Training at customer site for up to 6 people. (South America)



[STR90005: PolyWorks/Modeler + PolyWorks/Inspector package 3-day 'basic' ON-SITE training](#)

3-day 'basic' training on PolyWorks/Modeler, AND an additional 3-day 'basic' training on PolyWorks/Inspector package, on-site. Scheduled at two different times. Trainer travel expenses included. Training at customer site for up to 6 people. Client must have ordered at least one PolyWorks/Modeler&Inspector package. (USA, Canada, Mexico)



[STR90005-SA: PolyWorks Modeler + Inspector pck 3 dy 'basic' Customer Site training](#)

3-day 'basic' training on PolyWorks Modeler, AND an additional 3-day 'basic' training on PolyWorks Inspector package, Customer Site. Scheduled at two different times. Trainer travel expenses included. Training at customer site for up to 6 people. Client must have ordered at least one PolyWorks Modeler&Inspector package. (South America)



[STR90007: PolyWorks/Modeler OR on PolyWorks/Inspector package - 3-day 'Advanced' ONSITE training](#)

3-day 'advanced' training on PolyWorks/Modeler OR on PolyWorks/Inspector package, on-site. Trainer travel expenses included. Training at customer site for up to 6 people. (USA, Canada, Mexico)



[STR90008: "Surveying" 3-day Customer Site training](#)

3-day "Surveying" training on PolyWorks/Surveyor & Modeler package, on-site. Trainer travel expenses included. Training at customer site for up to SIX people. (USA, Canada, Mexico)



[STR90008-SA: Polyworks "Surveying" training 3 dy Customer Site Training](#)

Trainer travel expenses included. Training at customer site for up to 6 people. (South America)



[STR90009: PolyWorks/Inspector Probing package - 2-day ON-SITE training](#)

2-day training on PolyWorks/Inspector Probing package, on-site. Trainer travel expenses included. Training at customer site for up to 6 people. (USA, Canada, Mexico)



STR90009-SA: PolyWorks Inspector Probing package 2 day Customer Site Training

2-day training on PolyWorks Inspector Probing package. Trainer travel expenses included. Training at customer site for up to 6 people. (South America)



STR90013: Polyworks 2 day "Surveying" Customer Site Training

2-day "Surveying" training on PolyWorks/Surveyor & Modeler package, Customer site. Trainer travel expenses included. Training at customer site for up to SIX people. (USA, Canada, Mexico)

## Pointools



TR-LS-PT-AP-O1: Pointools 1st day Customer Site Training. APAC

Pointools Training at the customer site. In-person training. Including travel costs and expenses. 8 hours session. First day. Location: Asia



TR-LS-PT-AP-OA: Pointools Additional Day of Customer Site Training. APAC

Pointools Training at the customer site. In-person training. Including travel costs and expenses. 8 hour session. Extra day. Location: Asia



TR-LS-PT-NA-O1: Pointools - Training - on-site - 1st day - N.A.M.

Pointools Training at the customer site.  
In-person training.  
Area: USA & Canada  
Including travel costs and expenses.  
8 hours session. First day.



TR-LS-PT-NA-OA: Pointools - Training - on-site - extra day - N.A.M

Pointools Training at the customer site.  
In-person training.  
Area: USA & Canada  
Including travel costs and expenses.  
8 hours session. Extra day.



TR-LS-PT-W-2: Pointools - Training - Virtual Classroom - 2 hours

Pointools Training, Virtual Classroom.  
In-person training, online via the web.  
2 hours session.



TR-LS-PT-W-4: Pointools - Training - Virtual Classroom - 4 hours

Pointools Training, Virtual Classroom.  
In-person training, online via the web.  
4 hours session.



### Training --> PoinTools



#### TR-LS-PT-W-8: PoinTools - Training - Virtual Classroom - 8 hours

PoinTools Training, Virtual Classroom.  
In-person training, online via the web.  
8 hours session.

## Quantapoint

### Prism 3D

#### Customer Site



#### P3DTRN: PRISM 3D on-site training

One (1) day of training for PRISM 3D™ at the client site. Does not include travel and expenses, which are billed separately

#### Training Facility



#### P3DWEB: PRISM 3D web-based training

Two (2) hours of training for PRISM 3D™ via the web. Requires access to the Internet.

### QuantaCAD

#### Customer Site



#### QCTRN: QuantaCAD on-site training

One (1) day of training for QuantaCAD™ at the client site. Does not include travel and expenses, which are billed separately

#### Training Facility



#### QCWEB: QuantaCAD web-based training

Two (2) hours of training for QuantaCAD™ via the web. Requires access to the Internet.

## Rapidform

### Rapidform

#### Training Facility



#### STR60004: Rapidform Training, ad.Trainee

Rapidform Training in Sunnyvale, CA, added attendee (for any number of days)

### XO Complete

#### Customer Site



#### STR60008: XO Complete 4 Day Training Customer site

Customer Training for both XOS and XOY. 3 days are required for XOS and XOY training. RFI will send a trainer to any North American Location (US, CA, MX). No additional costs are incurred by customer; RFI covers all travel expenses for trainer. Up to 8 trainees allowed.



### XOR

#### Customer Site



#### STR60005: XOR 3 Day Training Customer site

Customer Site Training for XOR. 3 days are required for XOR-only training. RFI will send a trainer to any North American Location (US, CA, MX). No additional costs are incurred by customer; RFI covers all travel expenses for trainer. Up to 8 trainees allowed.

#### Training Facility



#### STR60002: Rapidform XOR Training. 3d

Rapidform XOR Training for new users in Sunnyvale, CA. The course is 3 days long and teaches all the essentials a new user needs to start using XOR. Covers all XOS functionality as well. Tuition fee covers up to 2 trainees (additional trainees \$499 each). Visit [www.rapidformsuccess.com/live-training](http://www.rapidformsuccess.com/live-training) for dates and additional info.

### XOS

#### Customer Site



#### STR60007: XOS and XOY 3 Day Training Customer site

Customer Site Training for both XOS and XOY. 3 days are required for XOS and XOY training. RFI will send a trainer to any North American Location (US, CA, MX). No additional costs are incurred by customer; RFI covers all travel expenses for trainer. Up to 8 trainees allowed.

#### Training Facility



#### STR60001: Rapidform XOS Training. 2 d

Rapidform XOS Training for new users in Sunnyvale, CA. The course is 2 days long and teaches all the essentials a new user needs to start using XOS. Tuition fee covers up to 2 trainees (additional trainees \$499 each). Visit [www.rapidformsuccess.com/live-training](http://www.rapidformsuccess.com/live-training) for dates and additional info.

### XOV

#### Customer Site



#### STR60006: XOY or XOS 2 Day Training Customer site

Onsite Training for either XOY only, or XOS only(i.e. not for both). 2 days are required for either XOS or XOY onsite. RFI will send a trainer to any North American Location (US, CA, MX). No additional costs are incurred by customer; RFI covers all travel expenses for trainer. Up to 8 trainees allowed.

#### Training Facility



#### STR60003: Rapidform XOY Training. 1d

Rapidform XOY Training for new users in Sunnyvale, CA. The course is 1 day long and teaches all the essentials a new user needs to start using XOY. Tuition fee covers up to 2 trainees (additional trainees \$499 each). Visit [www.rapidformsuccess.com/live-training](http://www.rapidformsuccess.com/live-training) for dates and additional info.

## SBG Geo



#### TR-LS-ATS-F: ATS Real-Reality Tunnel Software Basic Training customer site

Basic training for ATS RR Tunnel. Price per training day. Up to 3 students. Travel costs and expenses are not included. Minimum training = 2 days.



## Warranty

### 1 Month

#### Premium



EPP-FC-01: 1 Month Premium Focus 3D Warranty

One Month extension to existing Premium Focus 3D warranty.



EPP-SCAN-1: LS-1 Month Premium Warranty Extension

One Month extension to existing Premium LS warranty. This part number is not to be used as a stand alone warranty.

#### Standard



ESP-FC-01: 1 Month Standard Focus 3D Warranty

One Month extension to existing Standard Focus 3D warranty.



ESP-SCAN-1: LS-1 Month Warranty Extension

One Month extension to existing standard LS warranty. This part number is not to be used as a stand alone warranty.

### 1 year

#### Premium



PWPP-FC: Premium Wty PLUS Focus 3D, 1yr

One year Premium Warranty PLUS that includes parts and labor on service and all shipping charges to customer within warranty period. Recertification/Calibration is upon renewal only after 1st year of delivery. FARO will supply a loaner scanner shipped the next business day at no cost dependent on availability. Added benefit to Premium Warranty by providing a no cost loaner at the time of Annual Calibration.



PWPP-FC-03: Premium Wty PLUS Focus 3D, 3yr

Three year Premium Warranty PLUS that includes parts and labor on service and all shipping charges to customer within warranty period. Recertification/Calibration is upon renewal only after 1st year of delivery. FARO will supply a loaner scanner shipped the next business day at no cost dependent on availability. Added benefit to Premium Warranty by providing a no cost loaner at the time of Annual Calibration.



PWPP-LS: Premium Wty PLUS LaserScanner 3D, 1yr

One year Premium Warranty PLUS that includes parts and labor on service and all shipping charges to customer within warranty period. Recertification/Calibration is upon renewal only after 1st year of delivery. FARO will supply a loaner scanner shipped the next business day at no cost dependent on availability. Added benefit to Premium Warranty by providing a no cost loaner at the time of Annual Calibration.



### Warranty --> 1 year --> Premium



Warranty

#### PWPP-LS-3: Premium Wty PLUS LaserScanner 3D, 3yr

Three year Premium Warranty PLUS that includes parts and labor on service and all shipping charges to customer within warranty period. Recertification/Calibration is upon renewal only after 1st year of delivery. FARO will supply a loaner scanner shipped the next business day at no cost dependent on availability. Added benefit to Premium Warranty by providing a no cost loaner at the time of Annual Calibration.



Warranty

#### PWPPS-FC: Premium Wty PLUS Focus 3D, 1yr POS

One year Premium Warranty PLUS that includes parts and labor on service and all shipping charges to customer within warranty period. Recertification/Calibration is upon renewal only after 1st year of delivery. FARO will supply a loaner scanner shipped the next business day at no cost dependent on availability. Added benefit to Premium Warranty by providing a no cost loaner at the time of Annual Calibration. This warranty plan is offered at the point of sales ONLY.



Warranty

#### PWPPS-LS: Premium Wty PLUS LS, 1yr POS

One year Premium Warranty PLUS that includes parts and labor on service and all shipping charges to customer within warranty period. Recertification/Calibration is upon renewal only after 1st year of delivery. FARO will supply a loaner scanner shipped the next business day at no cost dependent on availability. Added benefit to Premium Warranty by providing a no cost loaner at the time of Annual Calibration. This warranty plan is offered at the point of sales ONLY.



Warranty

#### PWS-FC: Premium Warranty Focus 3D, 1 year

One year Premium Warranty that includes parts and labor on service and all shipping charges to customer within warranty period. Recertification/Calibration is upon renewal only after 1st year of delivery. FARO will supply a loaner scanner shipped the next business day at no cost dependent on availability.



The Measure of Success  
NO PICTURE AVAILABLE

#### PWS-LS: Premium Warranty Laser Scanner LS - 1 year

One year Premium Warranty that includes parts and labor on service and all shipping charges to customer within warranty period. Recertification/Calibration is upon renewal only after 1st year of delivery. FARO will supply a loaner scanner shipped the next business day at no cost dependent on availability. Loaner scanner does not apply when a scanner is returned for certification.

### Standard



Warranty

#### SWS-FC: Standard Warranty Focus 3D, 1 year

One year Standard Warranty that includes parts and labor on service and Return shipping to customer within warranty period. Recertification/Calibration is upon renewal only after 1st year of delivery. Does NOT include loaner scanner during service period.



Warranty

#### SWS-FC-EDU: Standard Warranty Focus 3D, 1 yr Edu

One year Standard Warranty that includes parts and labor on service and Return shipping to customer within warranty period. Recertification/Calibration is upon renewal only after 1st year of delivery. Does NOT include loaner scanner during service period. For educational organisations only.



### Warranty --> 1 year --> Standard



NO PICTURE AVAILABLE

#### SWS-LS: Standard Warranty Laser Scanner LS - 1 year

One year Standard Warranty that includes parts and labor on service and Return shipping to customer within warranty period. Recertification/Calibration is upon renewal only after 1st year of delivery. Does NOT include loaner scanner during service period.



NO PICTURE AVAILABLE

#### SWS-LS-EDU: Std Wty Laser Scanner LS, 1Yr, Edu

One year Standard Warranty that includes parts and labor on service and Return shipping to customer within warranty period. Recertification/Calibration is upon renewal only after 1st year of delivery. Does NOT include loaner scanner during service period.  
For educational organisations only.



NO PICTURE AVAILABLE

#### SWS-LS-UPGD: Standard Warranty Laser Scanner LS - Photon Upgrade - 1 Year

One year Standard Warranty that includes parts and labor on service and Return shipping to customer within warranty period. Does NOT include loaner scanner during service period. ATTENTION: This item is only valid when ordered together with an upgrade of a LS 880/820/420 scanner to the latest Photon specifications.

## 2 year

### Standard



NO PICTURE AVAILABLE

#### SWS-LS-2: Std Wty LaserScanner LS, 2 yr

Two year Standard Warranty that includes parts and labor on service and Return shipping to customer within warranty period. Recertification/Calibration is upon renewal only after 1st year of delivery. Does NOT include loaner scanner during service period.

## 3 years

### Premium



#### PWS-FC-3: Premium Warranty Focus 3D, 3 year

Three year Premium Warranty that includes Recertification/Calibration within warranty period, parts and labor on service, and all shipping charges for the FARO Laser Scanner. FARO will supply a loaner scanner shipped the next business day at no cost dependent on availability.



NO PICTURE AVAILABLE

#### PWS-LS-3: Premium Warranty LaserScanner LS, 3 years

Three year Premium Warranty that includes Recertification/Calibration within warranty period, parts and labor on service, and all shipping charges for the FARO Laser Scanner. FARO will supply a loaner scanner shipped the next business day at no cost dependent on availability. Loaner scanner does not apply when a scanner is returned for certification.

### Plus



#### PWPPS-FC-03: Premium Wty PLUS Focus 3D, 3yr POS

3 year premium warranty plus. Warranty includes annual arm certification, parts, labor, ALL shipping charges and loaner FaroArm shipped the next business day. Service goal is 7 working days from date of receipt. Added benefit to Premium Warranty by providing a no cost loaner at the time of Annual Calibration.  
This warranty plan is offered at the point of sale ONLY.



### PWPPS-LS-3: Premium Wty PLUS LS, 3yr POS

3 year premium warranty plus. Warranty includes annual certification, parts, labor, ALL shipping charges and loaner unit shipped the next business day. Service goal is 7 working days from date of receipt. Added benefit to Premium Warranty by providing a no cost loaner at the time of Annual Calibration. This warranty plan is offered at the point of sale ONLY.

## Standard



### SWS-FC-3: Standard Warranty Focus 3D, 3 year

Three year Standard Warranty that includes parts and labor on service and Return shipping to customer within warranty period. Recertification/Calibration is upon renewal only after 1st year of delivery. Does NOT include loaner scanner during service period.

## Upgrade 1 year

### Premium



### PWPS-FC-01: Premium Warranty Focus 3D – 1 Year – POS – Upgrade

Upgrade 1st year Standard Warranty to a single year Premium Warranty. This Premium Warranty plan is offered at the point of sale ONLY



### PWSS-LS-1ST: Premium Warranty Laser Scanner LS 1st year, POS

Upgrade of 1st year Standard Warranty plan to a One year Premium Warranty Plan at a discounted price (valid only at Point-of-Sale). Warranty includes parts and labor on service, and all shipping charges for the FARO Laser Scanner. Recertification/Calibration is upon renewal only after 1st year of delivery. FARO will supply a loaner scanner shipped the next business day at no cost dependent on availability. Loaner scanner does not apply when a scanner is returned for certification.

## Upgrade 3 years

### Premium



### PWPS-FC-03: Premium Warranty Focus 3D – 3 Year – POS – Upgrade

Upgrade 1st year Standard Warranty to a 3 year Premium Warranty. This Premium Warranty plan is offered at the point of sale ONLY



### PWSS-LS-3-1ST: Premium Warranty Laser Scanner LS, 3 years, POS

Upgrade of 1st year Standard Warranty plan to a three year Premium Warranty Plan at a discounted price (valid only at Point-of-Sale). Warranty includes yearly Recertification/Calibration within warranty period, parts and labor on service, and all shipping charges for the FARO Laser Scanner. FARO will supply a loaner scanner shipped the next business day at no cost dependent on availability. Loaner scanner does not apply when a scanner is returned for certification.

## Certification



### NWS-LS: Non-warranty evaluation Laser Scanner LS

FARO Laser Scanner LS test and analysis fee. Recertification/Calibration service is included and valid for one year from certification date. This is a one-time service and is not a Warranty plan. If equipment requires additional repairs customer will be charged extra for parts and labor. Includes return shipping charge.



SCU-FC: Focus3D Certification

Yearly re-certification and check of your FARO Focus3D.  
Complete calibration of the Focus3D in the FARO Service Center including certificate.



## Rental



### CTRL-LS-RENTAL: Laser Scanner LS Monthly Rental

Rental fee for LS Laser Scanner Equipment including: aluminum tripod, starter kit (registration spheres), LS portable battery kit & charger, notebook computer and FARO Scene (installed on the notebook computer). FARO Training req'd prior to operating equipment. Price per Month.

## Software Rental



### SOFT90001-RNT: PolyWorks/Modeler & Inspector, with NURBS 30-Day Rental

PolyWorks/Modeler & Inspector, with NURBS 30-day license for PRODUCTION purposes. Note: One-month credit will be applied on the list price of the license to be purchased, provided that InnovMetric receives a purchase order within 90 days following the end of the rental period. (Applies only if the rented license is the same as the purchased license. If the case, please mention 'Includes Rental Credit' on the PO.)



### SOFT90002-RNT: PolyWorks Modeler/Inspector 30-Day Rental

PolyWorks/Modeler & PolyWorks/Inspector 30-day license for PRODUCTION purposes. Note: If the customer decides to purchase the PolyWorks license after having rented it, a one-month credit will be applied on the list price of the license to be purchased, provided that InnovMetric receives a purchase order within 90 days following the end of the rental period. (Applies only if the rented license is the same as the purchased license. If the case, please mention 'Includes Rental Credit' on the PO.)



### SOFT90003-RNT: PolyWorks/Modeler with NURBS 30-Day Rental

PolyWorks/Modeler with NURBS 30-day license for PRODUCTION purposes. Note: One-month credit will be applied on the list price of the license to be purchased, provided that InnovMetric receives a purchase order within 90 days following the end of the rental period. (Applies only if the rented license is the same as the purchased license. If the case, please mention 'Includes Rental Credit' on the PO.)



### SOFT90004-RNT: PolyWorks/Modeler 30-Day Rental

PolyWorks/Modeler 30-day license for PRODUCTION purposes. Note: One-month credit will be applied on the list price of the license to be purchased, provided that InnovMetric receives a purchase order within 90 days following the end of the rental period. (Applies only if the rented license is the same as the purchased license. If the case, please mention 'Includes Rental Credit' on the PO.)



### SOFT90005-RNT: PolyWorks/Inspector 30-Day Rental

PolyWorks/Inspector 30-day license for PRODUCTION purposes. Note: One-month credit will be applied on the list price of the license to be purchased, provided that InnovMetric receives a purchase order within 90 days following the end of the rental period. (Applies only if the rented license is the same as the purchased license. If the case, please mention 'Includes Rental Credit' on the PO.)



### Rental --> Software Rental



#### SOFT90028-RNT: PolyWorks/Surveyor 30-Day Rental

PolyWorks/Surveyor 30-day license for PRODUCTION purposes. Note: One-month credit will be applied on the list price of the license to be purchased, provided that InnovMetric receives a purchase order within 90 days following the end of the rental period. (Applies only if the rented license is the same as the purchased license. If the case, please mention 'Includes Rental Credit' on the PO.)



#### SOFT90029-RNT: PolyWorks/Surveyor & Modeler 30-Day Rental

PolyWorks/Surveyor & Modeler 30-day license for PRODUCTION purposes. Note: One-month credit will be applied on the list price of the license to be purchased, provided that InnovMetric receives a purchase order within 90 days following the end of the rental period. (Applies only if the rented license is the same as the purchased license. If the case, please mention 'Includes Rental Credit' on the PO.)